

## Anti human SALL1 mouse monoclonal antibody

SALL1: SAL-LIKE 1

Code No	PP-K9814-00
Clone No.	K9814
Lot.	A-2
Concentration	1 mg/mL
Volume	100 uL
Ig Class	G2a

### Description

Genbank NM\_002968

**Origin** Produced in BALB/c mouse ascites after inoculation with hybridoma of mouse myeloma cells (NS-1) and spleen cells derived from a BALB/c mouse immunized with Baculovirus-expressed recombinant human SALL1 (258-499 aa) .

**Epitope** -

**Specificity** This antibody specifically recognizes human SALL1 and cross reacts with mouse SALL 1. Not yet tested in other species.

**Purification** Ammonium sulfate fractionation

**Formulation** Physiological saline with 0.1% NaN<sub>3</sub> as a preservative.

### Application / Recommended Concentration

In order to obtain the best results, optimal working dilutions should be determined by each individual user.

**Western Blot** 1 ug/mL

**Non reducing Western Blot** Not yet tested

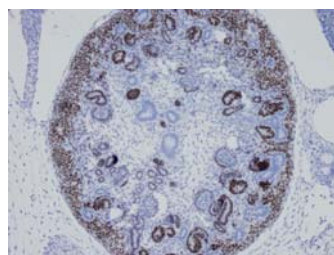
**ELISA** 0.5 ug/mL

**Immunoprecipitation** Decide by use

**Supershift Assay** Not yet tested

**Chromatin immunoprecipitation** Not yet tested

**Immunohistochemistry** Decide by use



Mouse / Embryo (Day14.5) / Kidney

**Storage** Store at 2 - 8 °C up to one month. For long-term storage, the solution may be frozen in working aliquots. Repeated freezing and thawing is not recommended. Storage in a frost-free freezer is not recommended.

**Reference** Nishinakamura R, et al., Development, 128: 3105-3115, 2001.  
Sato A, et al., Biochem Biophys Res Commun., 319(1): 103-113, 2004.  
Sakaki-Yumoto, et al., Development, 133: 3005-3013, 2006.

**Notes** Sodium azide may react with lead and copper plumbing to form explosive metal azides. Flush with large amounts of water during disposal.

FOR RESEARCH ONLY. NOT FOR USE IN HUMANS.

Not for Diagnostic or Therapeutic use. Purchase of this product does not include or carry any right to resell or transfer this product either as a stand-alone product or as a component of another product. Any use of this product other than the permitted use without the express written consent of Perseus Proteomics Inc. is prohibited.

**MADE IN JAPAN**

Sep 10, 2008

Distributed by

**SCETI** SCETI K.K.

3-6-7 Kasumigaseki, Chiyoda-ku, Tokyo 100-0013, Japan  
Tel +81(3) 5510-2347 Fax +81(3) 5510-0133  
URL: <http://www.sceti.co.jp/export/> e-mail: [exp-pet@sceti.co.jp](mailto:exp-pet@sceti.co.jp)

Manufactured by

**PPMX** PERSEUS PROTEOMICS

Perseus Proteomics Inc.

4-7-6 Komaba, Meguro-ku, Tokyo 153-0041, Japan  
URL: <http://www.ppmx.com>