

## Anti human COUP-TF I mouse monoclonal antibody

COUP-TF I: Chicken ovalbumin upstream promoter-transcription factor I

Code No	PP-H8124-00
	old No. -
Clone No.	H8124
Lot.	A-1
Concentration	1 mg/mL
Volume	100 uL
Ig Class	G2a
Description	Chicken ovalbumin upstream promoter transcription factor I (COUP-TFI, EAR3, COUP-TFA; NR2F1) is a member of orphan nuclear receptor. COUP-TF I is expressed in specific regions of the rostral brain, in stripes in the presumptive hindbrain. COUP-TFI has varied roles in the development of the peripheral nervous system, such as early regionalization of the neocortex, differentiation of subplate neurons and guidance of thalamocortical axons. COUP-TFs were shown to interact with a number of other nuclear receptors.
Nomenclature	NR2F1
Genbank	X12795
Origin	Produced in BALB/c mouse ascites after inoculation with hybridoma of mouse myeloma cells (NS-1) and spleen cells derived from a BALB/c mouse immunized with Baculovirus-expressed recombinant human COUP-TF I (6-81 aa).
Specificity	This antibody specifically recognizes human COUP-TF I and cross reacts with mouse and rat COUP-TF I. This antibody does not recognize human COUP-TF II and EAR2.
Purification	Ammonium sulfate fractionation.
Formulation	Physiological saline with 0.1% NaN <sub>3</sub> as a preservative.

### Application / Recommended Concentration

In order to obtain the best results, optimal working dilutions should be determined by each individual user.

Western Blot Decide by use

Non reducing Western Blot Decide by use

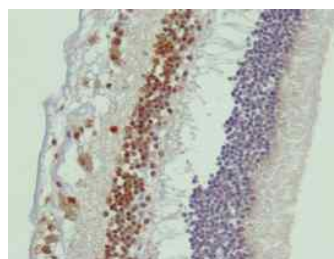
ELISA Decide by use

Immunoprecipitation Not yet tested

Supershift Assay Not yet tested

Chromatin immunoprecipitation Not yet tested

Immunohistochemistry 10 ug/mL



Human  
Retina/ Inner nuclear layer,  
Ganglionic layer

**Storage** Store at 2 - 8 °C up to one month. For long-term storage, the solution may be frozen in working aliquots. Repeated freezing and thawing is not recommended. Storage in a frost-free freezer is not recommended.

### Reference

**Notes** Sodium azide may react with lead and copper plumbing to form explosive metal azides. Flush with large amounts of water during disposal.

FOR RESEARCH ONLY. NOT FOR USE IN HUMANS.

Not for Diagnostic or Therapeutic use. Purchase of this product does not include or carry any right to resell or transfer this product either as a stand-alone product or as a component of another product. Any use of this product other than the permitted use without the express written consent of Perseus Proteomics Inc. is prohibited.

**MADE IN JAPAN**

Apr 23, 2008

Distributed by

**SCETI** SCETI K.K.

3-6-7 Kasumigaseki, Chiyoda-ku, Tokyo 100-0013, Japan  
Tel +81(3) 5510-2347 Fax +81(3) 5510-0133  
URL: <http://www.sceti.co.jp/export/> e-mail: [exp-pet@sceti.co.jp](mailto:exp-pet@sceti.co.jp)

Manufactured by

**PPMX**  
PERSEUS PROTEOMICS

Perseus Proteomics Inc.

4-7-6 Komaba, Meguro-ku, Tokyo 153-0041, Japan  
URL: <http://www.ppmx.com>