

Anti human GR common mouse monoclonal antibody

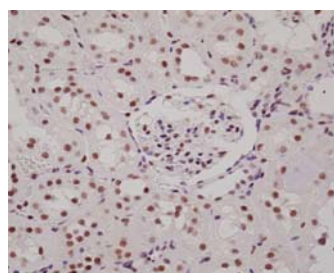
GR: Glucocorticoid Receptor

| | |
|---------------|--|
| Code No | PP-H8004-00 |
| Clone No. | H8004 |
| Lot. | A-1 |
| Concentration | 1 mg/mL |
| Volume | 100 uL |
| Ig Class | G2a |
| Description | Glucocorticoid receptor (GR; NR3C1) is a member of steroid receptor (AR, ER, MR, PR). GR is expressed in almost all human tissues and organs. GR binds to its sequences as an homodimer. Two different forms, GRa and GRb, differing in their C-terminal parts were isolated. GRa is the classic GR that binds to glucocorticoids and transactivates or transrepresses glucocorticoid-responsive promoters. GRb does not bind glucocorticoids. |
| Nomenclature | NR3C1 |
| Genbank | X03225 |
| Origin | Produced in BALB/c mouse ascites after inoculation with hybridoma of mouse myeloma cells (NS-1) and spleen cells derived from a BALB/c mouse immunized with Baculovirus-expressed recombinant human GR alpha (2-60 aa). |
| Specificity | This antibody specifically recognizes human GR alpha and beta and cross reacts with rat GR alpha and beta. Not yet tested in other species. |
| Purification | Ammonium sulfate fractionation. |
| Formulation | Physiological saline with 0.1% NaN ₃ as a preservative. |

Application / Recommended Concentration

In order to obtain the best results, optimal working dilutions should be determined by each individual user.

| | |
|-------------------------------|-----------------------|
| Western Blot | 1-10 ug/mL |
| Non reducing Western Blot | Not yet tested |
| ELISA | 0.35 ug/mL (A450=1.0) |
| Immunoprecipitation | Decide by use |
| Supershift Assay | Not yet tested |
| Chromatin immunoprecipitation | Not yet tested |
| Immunohistochemistry | 10 ug/mL |



Rat
Kidney
paraffin section

| | |
|---------|---|
| Storage | Store at 2 - 8 °C up to one month. For long-term storage, the solution may be frozen in working aliquots. Repeated freezing and thawing is not recommended. Storage in a frost-free freezer is not recommended. |
|---------|---|

Reference

| | |
|-------|---|
| Notes | Sodium azide may react with lead and copper plumbing to form explosive metal azides. Flush with large amounts of water during disposal. |
|-------|---|

FOR RESEARCH ONLY. NOT FOR USE IN HUMANS.

Not for Diagnostic or Therapeutic use. Purchase of this product does not include or carry any right to resell or transfer this product either as a stand-alone product or as a component of another product. Any use of this product other than the permitted use without the express written consent of Perseus Proteomics Inc. is prohibited.

MADE IN JAPAN

Aug 23, 2006

Distributed by

SCETI SCETI K.K.

3-6-7 Kasumigaseki, Chiyoda-ku, Tokyo 100-0013, Japan
Tel +81(3) 5510-2347 Fax +81(3) 5510-0133
URL: <http://www.sceti.co.jp/export/> e-mail: exp-pet@sceti.co.jp

Manufactured by

PPMX
PERSEUS PROTEOMICS

Perseus Proteomics Inc.

4-7-6 Komaba, Meguro-ku, Tokyo 153-0041, Japan
URL: <http://www.ppmx.com>