

Anti human ERR beta mouse monoclonal antibody

ERR beta: Estrogen-Related Receptor beta

Code No	PP-H6705-00
old No.	—
Clone No.	H6705
Lot.	A-1
Concentration	1 mg/mL
Volume	100 uL
Ig Class	G2a
Description	Estrogen-related receptor beta (ERRb, ERR2; NR3B2) is a member of orphan nuclear receptor. ERRb is expressed in liver, brain, uterus, vagina and cervix. ERRb has a role in early placental development.
Nomenclature	NR3B2
Genbank	X51417
Origin	Produced in BALB/c mouse ascites after inoculation with hybridoma of mouse myeloma cells (NS-1) and spleen cells derived from a BALB/c mouse immunized with Baculovirus-expressed recombinant human ERR beta(3-100 a.a.).
Specificity	This antibody specifically recognizes human ERR beta and cross reacts with mouse and rat ERR beta. This antibody does not recognize human ERR alpha and gamma.
Purification	Ammonium sulfate fractionation
Formulation	Physiological saline with 0.1% NaN ₃ as a preservative.

Application / Recommended Concentration

In order to obtain the best results, optimal working dilutions should be determined by each individual user.

Western Blot 1 ug/mL

Non reducing Western Blot 1 ug/mL

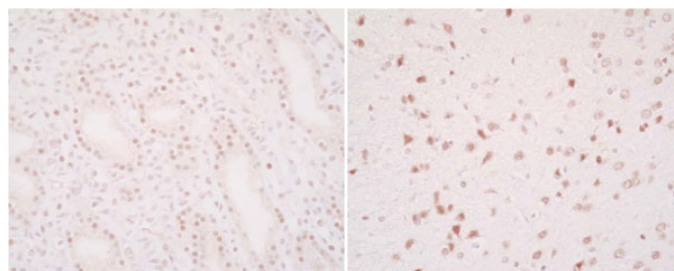
ELISA 0.1 ug/mL (A450=0.2)

Immunoprecipitation Decide by use

Supershift Assay Not yet tested

Chromatin immunoprecipitation Not yet tested

Immunohistochemistry 10 ug/mL



Rat
Kidney
paraffin section

Rat
Brain
paraffin section

Storage Store at 2 - 8 °C up to one month. For long-term storage, the solution may be frozen in working aliquots. Repeated freezing and thawing is not recommended. Storage in a frost-free freezer is not recommended.

Reference

Notes Sodium azide may react with lead and copper plumbing to form explosive metal azides. Flush with large amounts of water during disposal.

FOR RESEARCH ONLY. NOT FOR USE IN HUMANS.

Not for Diagnostic or Therapeutic use. Purchase of this product does not include or carry any right to resell or transfer this product either as a stand-alone product or as a component of another product. Any use of this product other than the permitted use without the express written consent of Perseus Proteomics Inc. is prohibited.

MADE IN JAPAN

Apr 17, 2008

Distributed by

SCETI SCETI K.K.

3-6-7 Kasumigaseki, Chiyoda-ku, Tokyo 100-0013, Japan
Tel +81(3) 5510-2347 Fax +81(3) 5510-0133
URL: <http://www.sceti.co.jp/export/> e-mail: exp-pet@sceti.co.jp

Manufactured by

PPMX PERSEUS PROTEOMICS

Perseus Proteomics Inc.

4-7-6 Komaba, Meguro-ku, Tokyo 153-0041, Japan
URL: <http://www.ppmx.com>