

## Anti human TLX mouse monoclonal antibody

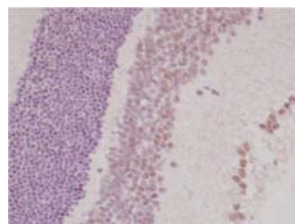
TLX: tailless homologue

Code No	PP-H6510-00
old No.	—
Clone No.	H6510
Lot.	A-1
Concentration	1 mg/mL
Volume	100 uL
Ig Class	G2a
Description	TLX (TLL, MTLL, Tailless; NR2E1) is a member of orphan nuclear receptor which is related to the Drosophila tailless gene. TLX transcripts become limited to the developing brain including the optic lobes. TLX has putative roles in proliferation or survival mechanisms in neuronal development.
Nomenclature	NR2E1
Genbank	Y13276
Origin	Produced in BALB/c mouse ascites after inoculation with hybridoma of mouse myeloma cells (NS-1) and spleen cells derived from a BALB/c mouse immunized with Baculovirus-expressed recombinant human TLX (81-180 aa) .
Specificity	This antibody specifically recognizes human TLX and cross reacts with mouse and rat TLX.
Purification	Ammonium sulfate fractionation.
Formulation	Physiologic saline with 0.1 % NaN <sub>3</sub> .

### Application / Recommended Concentration

In order to obtain the best results, optimal working dilutions should be determined by each individual user.

Western Blot	1µg/mL
Non reducing Western Blot	Not yet tested
ELISA	0.3µg/mL (A450=1.0)
Immunoprecipitation	1µg/mL
Supershift Assay	Not yet tested
Chromatin immunoprecipitation	Not yet tested
Immunohistochemistry	Decide by use



Rat retina  
Inner granular layer  
ganglionic layer

Storage	Store at 2 - 8 °C up to one month. For long-term storage, the solution may be frozen in working aliquots. Repeated freezing and thawing is not recommended. Storage in a frost-free freezer is not recommended.
---------	---

### Reference

Notes	Sodium azide may react with lead and copper plumbing to form explosive metal azides. Flush with large amounts of water during disposal.
-------	---

FOR RESEARCH ONLY. NOT FOR USE IN HUMANS.

Not for Diagnostic or Therapeutic use. Purchase of this product does not include or carry any right to resell or transfer this product either as a stand-alone product or as a component of another product. Any use of this product other than the permitted use without the express written consent of Perseus Proteomics Inc. is prohibited.

**MADE IN JAPAN**

May 7, 2008

Distributed by

**SCETI** SCETI K.K.

3-6-7 Kasumigaseki, Chiyoda-ku, Tokyo 100-0013, Japan  
Tel +81(3) 5510-2347 Fax +81(3) 5510-0133  
URL: <http://www.sceti.co.jp/export/> e-mail: [exp-pet@sceti.co.jp](mailto:exp-pet@sceti.co.jp)

Manufactured by

**PPMX** PERSEUS PROTEOMICS

Perseus Proteomics Inc.

4-7-6 Komaba, Meguro-ku, Tokyo 153-0041, Japan  
URL: <http://www.ppmx.com>