

Anti human ERR alpha mouse monoclonal antibody

ERR alpha: Estrogen-Related Receptor alpha

Code No	PP-H5844-10
Clone No.	H5844
Batch	A2F1
Size	100ug lyophilized antibody
Formulation	Lyophilized from phosphate-buffered saline (PBS) containing 5% Trehalose as a stabilizer.
Ig Class	G2a
Nomenclature	NR3B1
Genbank	X51416

Description Estrogen-related receptor alpha (ERRα, ERR1, ESRL1; NR3B1) is a member of orphan nuclear receptor. ERRα is expressed in liver, kidney, brain, heart, uterus, vagina and cervix. The protein is expressed with a major 53 kDa in the reproductive tissues. ERRα takes part at the cell cycle and the fatty acid metabolizing of the musculus skeleti. ERRα was shown to interact with ERα.

Origin Produced in BALB/c mouse ascites after inoculation with hybridoma of mouse myeloma cells (NS-1) and spleen cells derived from a BALB/c mouse immunized with Baculovirus-expressed recombinant human ERR alpha1 (98-171 aa) .

Specificity This antibody specifically recognizes human ERR alpha and cross reacts with mouse and rat ERR alpha. This antibody does not recognize human ERR beta and gamma.

Purification Ammonium sulfate fractionation

Application / Recommended Concentration

In order to obtain the best results, optimal working dilutions should be determined by each individual user.

Western Blot 1 ug/mL

Non-reducing Western Blot 3 ug/mL

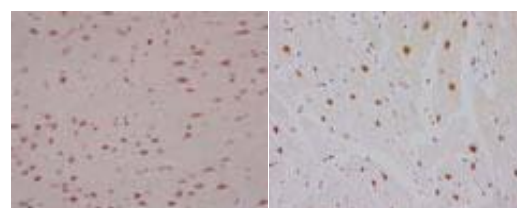
ELISA 0.3 ug/mL

Immunoprecipitation Decide by use

Supershift Assay Not yet tested

Chromatin immunoprecipitation Not yet tested

Immunohistochemistry 1-10 ug/mL



Rat
Cerebrum
paraffin section

Human Heart
Myocardium
paraffin section

Reconstitution Reconstitute with desired volume of distilled water. Reconstitution in 0.1 ml of distilled water yields an antibody concentration of 1mg/ml. Please note reconstituted solution will contain original PBS and 5% Treharose (see Formulation).

Storage Lyophilized samples are stable for twelve months when held at 2 - 8 C. Upon reconstitution, the antibody can be stored at 2 - 8 C up to one month. For long-term storage, the solution may be frozen in working aliquots. Repeated freezing and thawing is not recommended. Storage in a frost-free freezer is not recommended.

Reference Suzuki T, et al., Cancer Research, 64(13): 4670-4676, 2004.

Notes

FOR RESEARCH ONLY. NOT FOR USE IN HUMANS.

Not for Diagnostic or Therapeutic use. Purchase of this product does not include or carry any right to resell or transfer this product either as a stand-alone product or as a component of another product. Any use of this product other than the permitted use without the express written consent of Perseus Proteomics Inc. is prohibited.

MADE IN JAPAN

Apr 17, 2008

Distributed by

SCETI SCETI K.K.

3-6-7 Kasumigaseki, Chiyoda-ku, Tokyo 100-0013, Japan
Tel +81(3) 5510-2347 Fax +81(3) 5510-0133
URL: <http://www.sceti.co.jp/export/> e-mail: exp-pet@sceti.co.jp

Manufactured by

PPMX PERSEUS PROTEOMICS

Perseus Proteomics Inc.

4-7-6 Komaba, Meguro-ku, Tokyo 153-0041, Japan
URL: <http://www.ppmx.com>