

Anti human PR isoform B mouse monoclonal antibody

PR isoform B: Progesterone Receptor isoform B

Code No	PP-H5344-00 old No. 2ZH5344H
Clone No.	H5344
Lot.	A-1
Concentration	1 mg/mL
Volume	100 uL
Ig Class	G2a
Description	Progesterone receptor (PR; NR3C3) is a member of steroid receptor (GR, AR, MR, ER). PR binds progesterone. PR is expressed in uterus, ovary, vagina, fallopian tubes and breast. PR plays a central role in diverse reproductive events associated with establishment and maintenance of pregnancy, alveolar development in the breast, and sexual behavior. Two isoforms of this receptor have been identified, PR-A and PR-B, 94 and 114 kDa in size, respectively. PR was shown that PR-A and PR-B isoforms can form homodimers as well as heterodimers.
Nomenclature	NR3C3
Genbank	M15716
Origin	Produced in BALB/c mouse ascites after inoculation with hybridoma of mouse myeloma cells (NS-1) and spleen cells derived from a BALB/c mouse immunized with Baculovirus-expressed recombinant human PR isoform B (2-99 aa) .
Specificity	This antibody specifically recognizes human PR isoform B and cross reacts with mouse and rat PR isoform B. This antibody does not recognize human PR isoform A.
Purification	Ammonium sulfate fractionation
Formulation	Physiological saline with 0.1% NaN ₃ as a preservative.

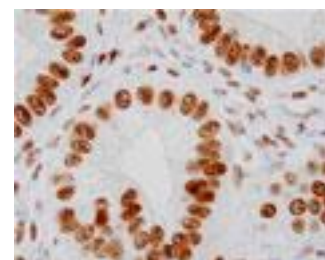
Application / Recommended Concentration

In order to obtain the best results, optimal working dilutions should be determined by each individual user.

Western Blot	1 ug/mL
Non reducing Western Blot	3 ug/mL
ELISA	0.3 ug/mL (A450=0.5)
Immunoprecipitation	Decide by use
Supershift Assay	Not yet tested
Chromatin immunoprecipitation	Not yet tested
Immunohistochemistry	10-20 ug/mL



Human Uterus
Endometrial epithelial cell
paraffin section



Human Uterus
Endometrial epithelial cell
paraffin section

Storage

Store at 2 - 8 °C up to one month. For long-term storage, the solution may be frozen in working aliquots. Repeated freezing and thawing is not recommended. Storage in a frost-free freezer is not recommended.

Reference

Notes

Sodium azide may react with lead and copper plumbing to form explosive metal azides. Flush with large amounts of water during disposal.

FOR RESEARCH ONLY. NOT FOR USE IN HUMANS.

Not for Diagnostic or Therapeutic use. Purchase of this product does not include or carry any right to resell or transfer this product either as a stand-alone product or as a component of another product. Any use of this product other than the permitted use without the express written consent of Perseus Proteomics Inc. is prohibited.

MADE IN JAPAN

Apr 17, 2008

Distributed by

SCETI SCETI K.K.

3-6-7 Kasumigaseki, Chiyoda-ku, Tokyo 100-0013, Japan
Tel +81(3) 5510-2347 Fax +81(3) 5510-0133
URL: <http://www.sceti.co.jp/export/> e-mail: exp-pet@sceti.co.jp

Manufactured by

PPMX
PERSEUS PROTEOMICS

Perseus Proteomics Inc.

4-7-6 Komaba, Meguro-ku, Tokyo 153-0041, Japan
URL: <http://www.ppmx.com>