

## Anti human TR alpha mouse monoclonal antibody

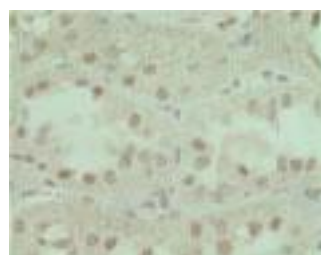
TR alpha: Thyroid Hormone Receptor alpha

Code No	PP-H2804-00 old No. 2ZH2804H
Clone No.	H2804
Lot.	A-1
Concentration	1 mg/mL
Volume	100 uL
Ig Class	G2a
Description	Thyroid hormone receptor alpha (TRa, THRA; NR1A1) is a member of nuclear hormone receptors. The ligands for TRa are the thyroid hormones, which exist in two forms: T4 (3,5,3',5'-tetraiodo-L-thyronine) and T3 (3,5,3'-tri-iodo-L-thyronine). TRa plays critical roles in the differentiation, growth, metabolism and physiology of a wide variety of tissues. The major partners of TRs are the RXRs, which strongly enhance their ability to bind to specific DNA sequences and contribute to the specificity of action of TR.
Nomenclature	NR1A1
Genbank	M24748
Origin	Produced in BALB/c mouse ascites after inoculation with hybridoma of mouse myeloma cells (NS-1) and spleen cells derived from a BALB/c mouse immunized with Baculovirus-expressed recombinant human TR alpha (2-51 aa) .
Specificity	This antibody specifically recognizes human TR alpha and cross reacts with mouse and rat TR alpha. This antibody does not recognize human TR beta.
Purification	Ammonium sulfate fractionation
Formulation	Physiological saline with 0.1% NaN <sub>3</sub> as a preservative.

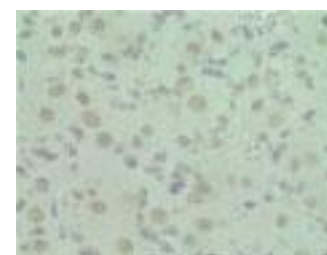
### Application / Recommended Concentration

In order to obtain the best results, optimal working dilutions should be determined by each individual user.

Western Blot	1 ug/mL
Non reducing Western Blot	3 ug/mL
ELISA	0.1 ug/mL (A450=0.5)
Immunoprecipitation	Not yet tested
Supershift Assay	Not yet tested
Chromatin immunoprecipitation	Not yet tested
Immunohistochemistry	20-50 ug/mL



Rat Kidney  
Renal tubules  
paraffin section



Rat Ovary  
Corpus luteum  
paraffin section

Storage	Store at 2 - 8 °C up to one month. For long-term storage, the solution may be frozen in working aliquots. Repeated freezing and thawing is not recommended. Storage in a frost-free freezer is not recommended.
---------	---

### Reference

Notes	Sodium azide may react with lead and copper plumbing to form explosive metal azides. Flush with large amounts of water during disposal.
-------	---

FOR RESEARCH ONLY. NOT FOR USE IN HUMANS.

Not for Diagnostic or Therapeutic use. Purchase of this product does not include or carry any right to resell or transfer this product either as a stand-alone product or as a component of another product. Any use of this product other than the permitted use without the express written consent of Perseus Proteomics Inc. is prohibited.

**MADE IN JAPAN**

Aug 10, 2006

Distributed by

**SCETI** SCETI K.K.

3-6-7 Kasumigaseki, Chiyoda-ku, Tokyo 100-0013, Japan  
Tel +81(3) 5510-2347 Fax +81(3) 5510-0133  
URL: <http://www.sceti.co.jp/export/> e-mail: [exp-pet@sceti.co.jp](mailto:exp-pet@sceti.co.jp)

Manufactured by

**PPMX**  
PERSEUS PROTEOMICS

Perseus Proteomics Inc.

4-7-6 Komaba, Meguro-ku, Tokyo 153-0041, Japan  
URL: <http://www.ppmx.com>