

## Anti human REVERB beta mouse monoclonal antibody

Rev-erb beta

Code No	PP-H2729-00 old No. 2ZH2729H
Clone No.	H2729
Lot.	A-1
Concentration	1 mg/mL
Volume	100 uL
Ig Class	G3
Description	Reverse orientation the c-erbA-1 gene beta (RevErb, BD73; NR1D2) is a member of orphan nuclear receptor. RevErb is expressed in heart, brain, lung, liver, skeletal muscles, kidney, spleen and testis. RevErb is indicating broad roles in cell proliferation and physiology.
Nomenclature	NR1D2
Genbank	L31785
Origin	Produced in BALB/c mouse ascites after inoculation with hybridoma of mouse myeloma cells (NS-1) and spleen cells derived from a BALB/c mouse immunized with Baculovirus-expressed recombinant human REVERB beta (4-101aa).
Specificity	This antibody specifically recognizes human REVERB beta and cross reacts with rat REVERB beta. This antibody does not recognize human REVERB alpha. Not yet tested in other species.
Purification	Ammonium sulfate fractionation
Formulation	Physiological saline with 0.1% NaN <sub>3</sub> as a preservative.

### Application / Recommended Concentration

In order to obtain the best results, optimal working dilutions should be determined by each individual user.

Western Blot 1 ug/mL

Non reducing Western Blot Not applicable

ELISA 0.3 ug/mL

Immunoprecipitation Decide by use

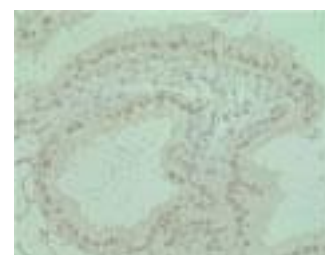
Supershift Assay Not yet tested

Chromatin immunoprecipitation Not yet tested

Immunohistochemistry 50 -100 ug/mL



Rat Cerebrum  
Nerve cell  
paraffin section



Rat Epididymis  
Epithelial cell  
paraffin section

**Storage** Store at 2 - 8 °C up to one month. For long-term storage, the solution may be frozen in working aliquots. Repeated freezing and thawing is not recommended. Storage in a frost-free freezer is not recommended.

### Reference

**Notes** Sodium azide may react with lead and copper plumbing to form explosive metal azides. Flush with large amounts of water during disposal.

FOR RESEARCH ONLY. NOT FOR USE IN HUMANS.

Not for Diagnostic or Therapeutic use. Purchase of this product does not include or carry any right to resell or transfer this product either as a stand-alone product or as a component of another product. Any use of this product other than the permitted use without the express written consent of Perseus Proteomics Inc. is prohibited.

**MADE IN JAPAN**

Aug 28, 2006

Distributed by

**SCETI** SCETI K.K.

3-6-7 Kasumigaseki, Chiyoda-ku, Tokyo 100-0013, Japan  
Tel +81(3) 5510-2347 Fax +81(3) 5510-0133  
URL: <http://www.sceti.co.jp/export/> e-mail: [exp-pet@sceti.co.jp](mailto:exp-pet@sceti.co.jp)

Manufactured by

**PPMX** PERSEUS PROTEOMICS

Perseus Proteomics Inc.

4-7-6 Komaba, Meguro-ku, Tokyo 153-0041, Japan  
URL: <http://www.ppmx.com>