

**KX591**

For research use only

## Anti Human CHRM5 Monoclonal Antibody

**Clone No. 3A6**

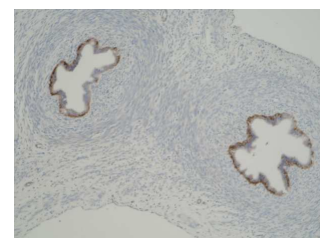
This product is generated from GANP® mice.



**Code No.** KX591  
**Target** CHRM5  
**Category** GPCR  
**Gene ID** 1133  
**Primary Source** HGNC:1954  
**Synonyms** HM5; MGC41838

**Type** Monoclonal Antibody  
**Immunogen** Partial peptide of Human CHRM5 (3rd extracellular domain)

**Raised in** GANP® mouse  
**Myeloma** P3U1  
**Clone number** 3A6  
**Purification** ProteinG  
**Source** Serum-free medium  
**Isotype** IgG1, $\kappa$   
**Cross Reactivity** Rat  
**Label** Unlabeled  
**Concentration** 0.25 mg/mL  
**Contents (Volume)** 50  $\mu$ g (200  $\mu$ L/vial)  
**Buffer** PBS [containing 2% Block Ace as a stabilizer, 0.1% Proclin as a bacteriostat]  
**Storage** Store at - 20 °C long term, store at 4 °C short term. Avoid repeated freeze-thaw cycles.  
**Application** ELISA,IHC



[IHC] Rat fallopian tube tissue

ELISA	WB	IHC	ICC
1.0	Not tested	5.0-10	Not tested
IP	FCM	IF	Neutralization
Not tested	Not tested	Not tested	Not tested

( $\mu$ g/mL)

### Reference

1. "Cloning and expression of the human and rat m5 muscarinic acetylcholine receptor genes." Bonner T.I. et al. Neuron 1:403-410(1988) [PubMed: 3272174] [Abstract]. Cited for: NUCLEOTIDE SEQUENCE [GENOMIC DNA].
2. Rae J.L. et al. Submitted (SEP-1997) to the EMBL/GenBank/DDBJ databases. Cited for: NUCLEOTIDE SEQUENCE [MRNA]. Tissue: Lens epithelium.
3. "Human muscarinic acetylcholine receptor 5 is localized on 15q13.1 and its expression in SH-SY5Y cells." Wang H et al. Submitted (APR-2002) to the EMBL/GenBank/DDBJ databases. Cited for: NUCLEOTIDE SEQUENCE [MRNA]. Tissue: Brain.

### UniPlot Summary

//Function The muscarinic acetylcholine receptor mediates various cellular responses, including inhibition of adenylate cyclase, breakdown of phosphoinositides and modulation of potassium channels through the action of G proteins. Primary transducing effect is  $P_i$  turnover.

//Subcellular location Cell membrane; Multi-pass membrane protein. Cell junction › synapse › postsynaptic cell membrane; Multi-pass membrane protein.

//Sequence similarities Belongs to the G-protein coupled receptor 1 family.