

KX589

For research use only

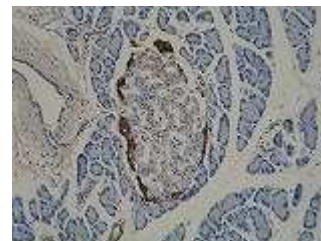
Anti Human GPR108 Monoclonal Antibody

Clone No. 2H9

This product is generated from GANP® mice.



Code No. KX589
Target GPR108
Category GPCR
Gene ID 56927
Primary Source HGNC:17829
Synonyms LUSTR2; MGC14393
Type Monoclonal Antibody
Immunogen Partial peptide of Human GPR108 (1st extracellular domain)



Raised in GANP® mouse
Myeloma P3U1
Clone number 2H9
Purification ProteinG
Source Serum-free medium
Isotype IgG3,k
Cross Reactivity Rat
Label Unlabeled
Concentration 0.25 mg/mL
Contents (Volume) 50 µg (200 µL/vial)
Buffer PBS [containing 2% Block Ace as a stabilizer, 0.1% Proclin as a bacteriostat]
Storage Store at - 20 °C long term, store at 4 °C short term. Avoid repeated freeze-thaw cycles.

Application ELISA, IHC

ELISA	WB	IHC	ICC
1.0	Not tested	5.0-10	Not tested
IP	FCM	IF	Neutralization
Not tested	Not tested	Not tested	Not tested

(µg/mL)

Reference

1. Mural R.J et al. Submitted (SEP-2005) to the EMBL/GenBank/DDBJ databases. Cited for: NUCLEOTIDE SEQUENCE [LARGE SCALE GENOMIC DNA].
2. "The status, quality, and expansion of the NIH full-length cDNA project: the Mammalian Gene Collection (MGC)." The MGC Project Team. Genome Res. 14:2121-2127(2004) [PubMed: 15489334] [Abstract]. Cited for: NUCLEOTIDE SEQUENCE [LARGE SCALE MRNA]. Tissue: Brain.
3. The European IMAGE consortium. Submitted (JUL-2000) to the EMBL/GenBank/DDBJ databases. Cited for: NUCLEOTIDE

UniPlot Summary

//Subcellular location Membrane; Multi-pass membrane protein Potential.

//Sequence similarities Belongs to the LU7TM family