

KX565

For research use only

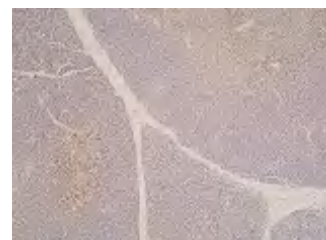
Anti Human HRH4 Monoclonal Antibody

Clone No. 2D5

This product is generated from GANP® mice.



Code No. KX565
Target HRH4
Category GPCR
Gene ID 59340
Primary Source HGNC:17383
Synonyms H4; H4R; BG26; HH4R; AXOR35; GPRv53; GPCR105; MGC133027; HRH4
Type Monoclonal Antibody
Immunogen Partial peptide of Human HRH4-1st extracellular domain



[IHC] Rat thymus tissue

Raised in GANP® mouse
Myeloma P3UI
Clone number 2D5
Purification ProteinG
Source Serum-free medium
Isotype IgG1,k
Cross Reactivity Rat
Label Unlabeled
Concentration 0.25 mg/mL
Contents (Volume) 50 µg (200 µL/vial)
Buffer PBS [containing 2% Block Ace as a stabilizer, 0.1% Proclin as a bacteriostat]
Storage Store below -20°C. Once thawed, store at 4°C. Repeated freeze-thaw cycles should be avoided.



[IHC] Rat spleen tissue

Application ELISA, IHC

ELISA	WB	IHC	ICC
1.0	Not tested	5.0	Not tested
IP	FCM	IF	Neutralization
Not tested	Not tested	Not tested	Not tested

(µg/mL)

Reference

- O'Reilly M, et al. Identification of a histamine H4 receptor on human eosinophils-role in eosinophil chemotaxis. J Recept Signal Transduct Res. 2002 Feb-Nov;22(1-4):431-48.
- Gutzmer R, et al. The histamine H4 receptor is functionally expressed on T(H)2 cells. J Allergy Clin Immunol. 2009 Mar;123(3):619-25.

UniPlot Summary

//Function: The H4 subclass of histamine receptors could mediate the histamine signals in peripheral tissues. Displays a significant level of constitutive activity (spontaneous activity in the absence of agonist).

//Tissue specificity: Expressed primarily in the bone marrow and eosinophils. Shows preferential distribution in cells of immunological relevance such as T-cells, dendritic cells, monocytes, mast cells, neutrophils. Also expressed in a wide variety of peripheral tissues, including the heart, kidney, liver, lung, pancreas, skeletal muscle, prostate, small intestine, spleen, testis, colon, fetal liver and lymph node.

//Sequence similarities: Belongs to the G-protein coupled receptor 1 family.