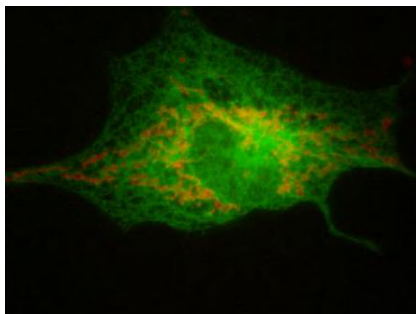


Anti KF-1 Polyclonal Antibody

Package Size	25 μ g (100 μ L / vial)
Format	Rabbit polyclonal antibody 0.25mg/mL
Buffer	PBS [containing 2% Block Ace as a stabilizer, 0.1% Proclin as a bacteriostat]
Storage	Store below -20°C Once thawed, store at 4°C. Repeated freeze-thaw cycles should be avoided.
Purification method	This antibody was purified from rabbit serum immunized with His tagged thioredoxin-mouse KF-1 fusion protein by antigen affinity column. And then, the antibody against His tagged thioredoxin was removed by His tagged thioredoxin affinity column.
Working dilution	For Immunocytochemistry ; 1 μ g/mL

Immunocytochemistry

Sample : Mouse KF-1 gene transgenic Cos-1 cell

Preparation of antibodies and instruction :

Hashimoto T, Tsujimura A

Research Institute for Neurological Diseases and Geriatrics

Anti KF-1 Polyclonal Antibody

【Reference】

1. Yasojima K. et al. : Biochem Biophys Res Commun. 1997 Feb 13;231(2):481-7
2. Yamada M. et al : Biochem Biophys Res Commun. 2000 Nov 11;278(1):150-7
3. Nishioka G. et al. : J Neural Transm. 2003 Mar;110(3):277-85

Supplier



3-6-7 Kasumigaseki, Chiyoda-ku, Tokyo 100-0013, JAPAN
Tel +81(3) 5510-2347 Fax +81(3) 5510-0133
URL: <http://www.sceti.jp/export/> e-mail: exp-pet@sceti.co.jp