

KO609

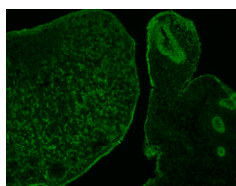
Anti mouse Emx2 Polyclonal Antibody

Code No.	KO609
Category	Development/Differentiation
Target	Emx2
Type	Polyclonal Antibody
Concentration	0.25mg/ml
Contents (Volume)	50µg (200µL/vial)
Gene ID	13797
Primary Source	MGI:95388
Synonyms	Pdo; Emx2
Immunogen	Recombinant protein of mouse Emx2 (full length)
Raised in	Rabbit
Purification	ProteinG
Source	Rabbit Serum
Cross Reactivity	Not Tested
Label	Unlabeled
Buffer	PBS [containing 2% Block Ace as a stabilizer, 0.1% Proclin as a bacteriostat]
Storage	Store below -20°C. Once thawed, store at 4°C. Repeated freeze-thaw cycles should be avoided.
Application	ELISA, WB, IHC, ICC,IF

Recommended Antibody Dilutions

ELISA	WB	IHC	ICC
1.0	1.0-5.0	1.0-2.0	1.0-5.0
IP	FCM	IF	Neutralization
Not Tested	Not Tested	1.0-5.0	Not Tested

(µg/mL)



IF
Sample:
mouse ovary

Preparation of antibodies
Dr. Ken-ichirou Morohashi

Biology of sex differences Department of Molecular Biology Faculty of Medical Sciences, Kyushu University, Fukuoka, JAPAN

UniPlot Summary	Transcription factor, which in cooperation with EMX2, acts to generate the boundary between the roof and archipallium in the developing brain. May function in combinations with OTX1/2 to specify cell fates in the developing central nervous system.
Reference	<ol style="list-style-type: none"> 1) Noonan F.C. et al.: Genomics 81:58-66(2003) 2) Simeone A. et al.: EMBO J. 11:2541-2550(1992) 3) Simeone A. et al.: Nature 358:687-690(1992) 4) Shinozaki K. et al.: Mech. Dev. 121:475-489(2004)