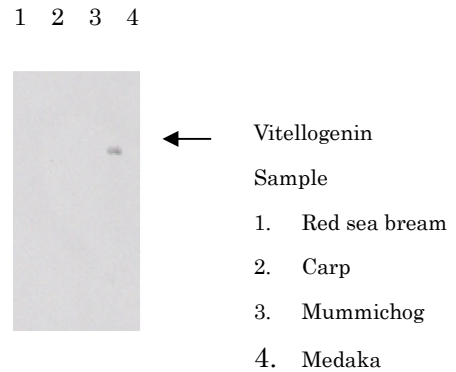
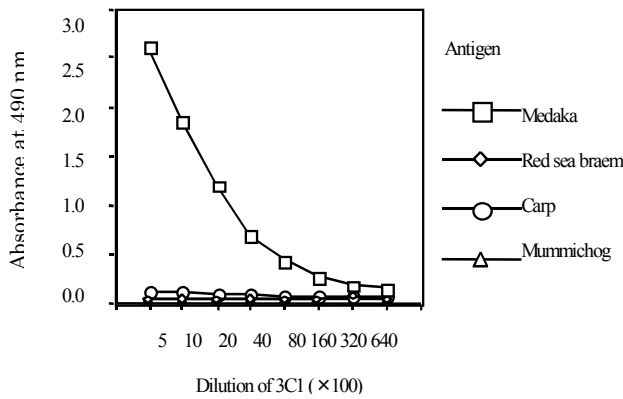


**Anti Medaka Vitellogenin Monoclonal Antibody  
(Clone No. 3C1)**

Package Size 100  $\mu$ g(100  $\mu$  L/vial)  
 Format Mouse monoclonal antibody 1.0mg/mL  
 Buffer 10mM sodium phosphate , 0.15M sodium chloride , 1%BSA , pH7.4  
 Storage Store below  $-20^{\circ}\text{C}$ .  
 Once thawed, store at  $4^{\circ}\text{C}$ . Repeated freeze-thaw cycles should be avoided.  
 Clone No. 3C1  
 Subclass IgG1  
 Immunogen source Medaka vitellogenin purified from 17  $\beta$  -estradiol treated serum and ascite.  
 Working dilution Immunoblotting 0.01~0.1  $\mu$ g/mL ;  
 ELISA 0.1~0.5  $\mu$ g/mL  
 (Fixed quantity system by ELISA has not been established.)  
 Specificity <cross reactivity>

	Medaka	Red sea bream	Carp	mummichog
ELISA	(+)	(-)	(-)	(-)
Immunoblotting	(+)	(-)	(-)	(-)



**ELISA**

**Antigen:**

Medaka vitellogenin was purified from female serum. Red sea bream and mummichog vitellogenins were purified from male fish induced with 17 $\beta$ -estradiol. Each antigen were diluted to 5 $\mu$ g/mL and added to microtiter plate

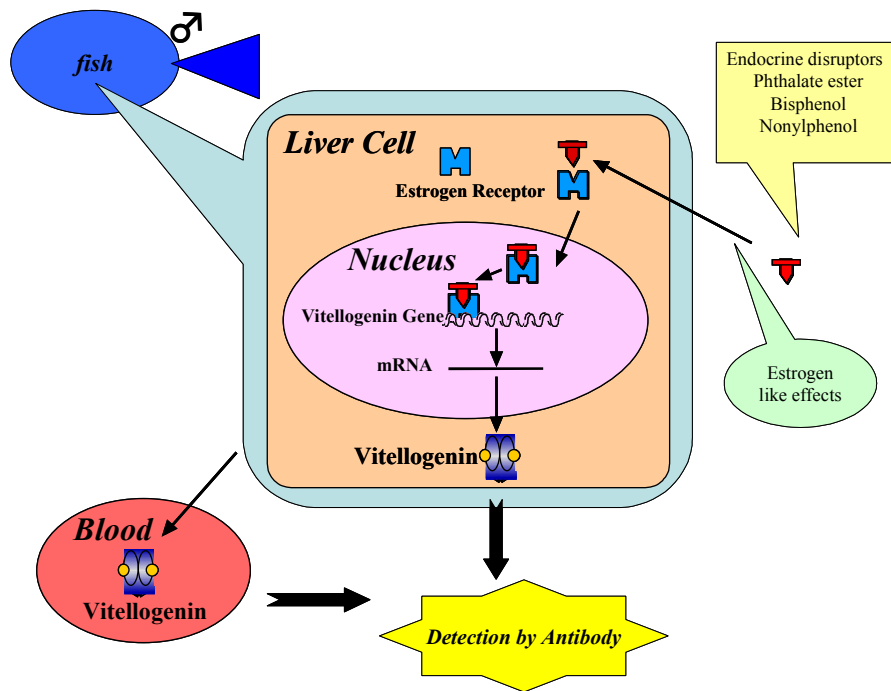
Primary antibody (3C1) Purified monoclonal antibody

**IMMUNOBLOTTING**

Sample Plasma(dilution 1:40) from female fish (carp) or male fish induced with 17  $\beta$  -estradiol (red sea bream, mummichog and medaka).

Primary antibody3C1 diluted 1:10<sup>5</sup>

**Anti Medaka Vitellogenin Monoclonal Antibody  
(Clone No. 3C1)**



**【References】**

1. N.Hiramastu, M.Shimizu, H.Fukada, M.Kitamura, K.Ura, H.Fuda, and A.Hara, (1997) *Comp. Biochem Physiol.* 118C(2) 149-157
2. N.Hiramatsu and A.Hara. (1996) *Comp Biochem Physiol.* 115A(3) 243-251
3. H.Okumura, A.Hara, F.Saeki, T.Todo, S.Adachi and K.Yamauchi,(1995) *Fisheries Science* , 61(2) 283-289
4. T.Matsubara, T.Wada and A.Hara, (1994) *Comp Biochem Physiol.* 109B(4) 545-555
5. Y.Tao, A.Hara, R.. G. Hodson, L. C. Woods III and C. V. Sullivan, (1993) *Fish Physiol. Biochem.* 12(1) 31-46
6. A.Hara, C. V. Sullivan and W.W. Dickhoff,(1993) *Zool. Sci.*, 10(2), 245-256

Supplier

**SCETI**  
**SCETI K.K.**

3-6-7 Kasumigaseki, Chiyoda-ku, Tokyo 100-0013, JAPAN  
Tel +81(3) 5510-2347 Fax +81(3) 5510-0133  
URL: <http://www.sceti.jp/export/> e-mail: [exp-pet@sceti.co.jp](mailto:exp-pet@sceti.co.jp)