

KB561

For research use only

Anti Human GOSR2 Polyclonal Antibody

Code No. KB561
Target GOSR2
Category Transporter
Gene ID 9570
Primary Source HGNC:4431
Synonyms Bos1; GS27; GOSR2

Type Polyclonal Antibody
Immunogen Recombinant protein of full length Human GOSR2

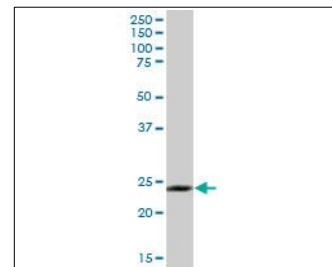
Raised in Mouse
Myeloma -
Clone number -
Purification Protein A purified
Source Mouse Serum
Isotype -
Cross Reactivity -
Label Unlabeled
Concentration 0.5 mg/mL
Contents (Volume) 50 µg
Buffer PBS, pH 7.2

Storage Store at - 20 °C long term, store at 4 °C short term. Avoid repeated freeze-thaw cycles.

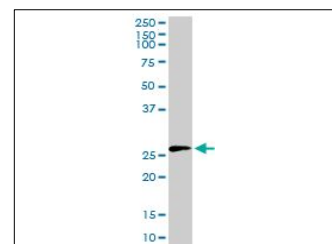
Application WB,IF

ELISA	WB	IHC	ICC
-	1.0	-	-
IP	FCM	IF	Neutralization
-	-	10	-

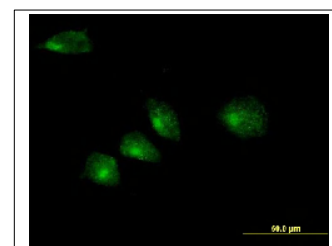
(µg/mL)



[WB] human stomach tissue lysate



[WB] GOSR2 transfected 293T cell lysate



[IF] HeLa cell

Reference

1. Lowe S.L., et al. "A SNARE involved in protein transport through the Golgi apparatus." *Nature* 389:881-884(1997)
2. Bui T.D., et al. "cDNA characterization and chromosomal mapping of human Golgi SNARE GS27 and GS28 to chromosome 17." *Genomics* 57:285-288(1999)
3. The MGC Project Team. "The status, quality, and expansion of the NIH full-length cDNA project: the Mammalian Gene Collection (MGC)." *Genome Res.* 14:2121-2127(2004)

UniPlot Summary

//Function: Involved in transport of proteins from the cis/medial-Golgi to the trans-Golgi network.

//Subcellular location: Golgi apparatus membrane; Single-pass type IV membrane protein.

//Sequence similarities: Belongs to the GOSR2 family.