

KB559

For research use only

Anti Human EME1 Polyclonal Antibody

Code No. KB559
Target EME1
Category Enzyme
Gene ID 146956
Primary Source HGNC:24965
Synonyms MMS4L; FLJ31364; EME1

Type Polyclonal Antibody
Immunogen Recombinant protein of full length Human EME1

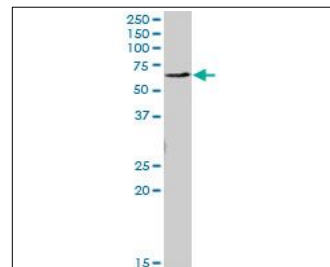
Raised in Mouse
Myeloma -
Clone number -
Purification Protein A purified
Source Mouse Serum
Isotype -
Cross Reactivity -
Label Unlabeled
Concentration 0.5 mg/mL
Contents (Volume) 50 µg
Buffer PBS, pH 7.2

Storage Store at - 20 °C long term, store at 4 °C short term. Avoid repeated freeze-thaw cycles.

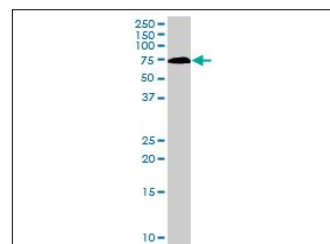
Application WB,IF

ELISA	WB	IHC	ICC
-	1.0	-	-
IP	FCM	IF	Neutralization
-	-	10	-

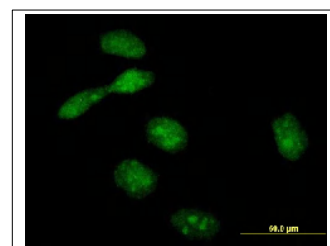
(µg/mL)



[WB] HeLa cell lysate



[WB] EME1 transfected 293T cell lysate



[IF] HeLa cell

Reference

1. Ota T., et al. "Complete sequencing and characterization of 21,243 full-length human cDNAs." Nat. Genet. 36:40-45(2004)
2. Oegruenc M., et al. "Identification and characterization of human MUS81-MMS4 structure-specific endonuclease." J. Biol. Chem. 278:21715-21720(2003)
3. Ciccio A., et al. "Identification and characterization of the human mus81-eme1 endonuclease." J. Biol. Chem. 278:25172-25178(2003)

UniPlot Summary

//Function: Interacts with MUS81 to form a DNA structure-specific endonuclease with substrate preference for branched DNA structures with a 5'-end at the branch nick. Typical substrates include 3'-flap structures, replication forks and nicked Holliday junctions. May be required in mitosis for the processing of stalled or collapsed replication forks.
//Subcellular location: Nucleus > nucleolus. Note: Recruited to regions of DNA damage in S-phase cells.
//Sequence similarities: Belongs to the EME1/MMS4 family.