

**KB557**

For research use only

# Anti Human UQCRC1 Polyclonal Antibody

**Code No.** KB557  
**Target** UQCRC1  
**Category** Enzyme  
**Gene ID** 7384  
**Primary Source** HGNC:12585  
**Synonyms** QCR1; UQCR1; D3S3191; UQCRC1

**Type** Polyclonal Antibody  
**Immunogen** Recombinant protein of full length Human UQCRC1

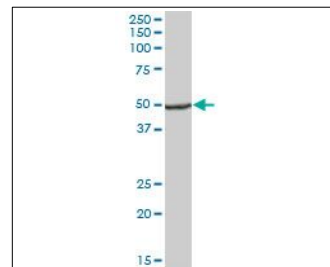
**Raised in** Mouse  
**Myeloma** -  
**Clone number** -  
**Purification** Protein A purified  
**Source** Mouse Serum  
**Isotype** -  
**Cross Reactivity** -  
**Label** Unlabeled  
**Concentration** 0.5 mg/mL  
**Contents (Volume)** 50 µg  
**Buffer** PBS, pH 7.2

**Storage** Store at - 20 °C long term, store at 4 °C short term. Avoid repeated freeze-thaw cycles.

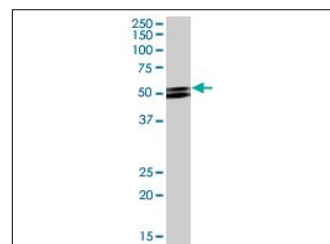
**Application** WB,IF

| ELISA | WB  | IHC | ICC            |
|-------|-----|-----|----------------|
| -     | 1.0 | -   | -              |
| IP    | FCM | IF  | Neutralization |
| -     | -   | 20  | -              |

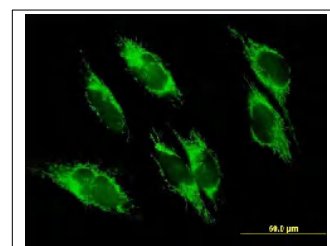
(µg/mL)



[WB] human spleen tissue lysate



[WB] UQCRC1 transfected 293T cell lysate



[IF] HepG2 cell

## Reference

- Hoffman G.G., et al. "Complete coding sequence, intron/exon organization, and chromosomal location of the gene for the core I protein of human ubiquinol-cytochrome c reductase." J. Biol. Chem. 268:21113-21119(1993)
- Islam M.M., et al. "A complete cDNA sequence for core I protein subunit of human ubiquinol-cytochrome c reductase." Biochem. Mol. Biol. Int. 32:797-805(1994)
- Islam M.M., et al. Erratum Biochem. Mol. Biol. Int. 33:410-410(1994)

## UniPlot Summary

//Function: This is a component of the ubiquinol-cytochrome c reductase complex (complex III or cytochrome b-c1 complex), which is part of the mitochondrial respiratory chain. This protein may mediate formation of the complex between cytochromes c and c1.  
//Subcellular location: Mitochondrion inner membrane.  
//Sequence similarities: Belongs to the peptidase M16 family. UQCRC1/QCR1 subfamily.