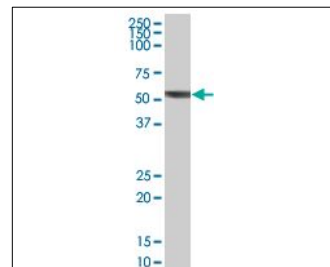


KB556

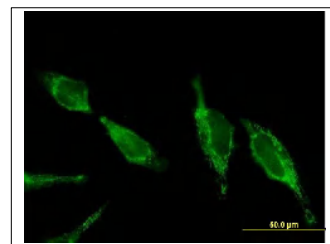
For research use only

Anti Human UQCRC2 Polyclonal Antibody

Code No.	KB556
Target	UQCRC2
Category	Enzyme
Gene ID	7385
Primary Source	HGNC:12586
Synonyms	QCR2; UQCR2; UQCRC2
Type	Polyclonal Antibody
Immunogen	Recombinant protein of full length Human UQCRC2
Raised in	Mouse
Myeloma	-
Clone number	-
Purification	Protein A purified
Source	Mouse Serum
Isotype	-
Cross Reactivity	-
Label	Unlabeled
Concentration	0.5 mg/mL
Contents (Volume)	50 µg
Buffer	PBS, pH 7.2



[WB] UQCRC2 transfected 293T cell lysate



[IF] HeLa cell

Storage Store at - 20 °C long term, store at 4 °C short term. Avoid repeated freeze-thaw cycles.

Application WB, IF

ELISA	WB	IHC	ICC
-	1.0	-	-
IP	FCM	IF	Neutralization
-	-	10	-

(µg/mL)

Reference

- Hosokawa Y., et al. "Complementary DNA encoding core protein II of human mitochondrial cytochrome bc1 complex. Substantial diversity in deduced primary structure from its yeast counterpart." J. Biol. Chem. 264:13483-13488(1989)
- The MGC Project Team. "The status, quality, and expansion of the NIH full-length cDNA project: the Mammalian Gene Collection (MGC)." Genome Res. 14:2121-2127(2004)
- Imami K., et al. "Automated phosphoproteome analysis for cultured cancer cells by two-dimensional nanoLC-MS using a calcined titania/C18 biphasic column." Anal. Sci. 24:161-166(2008)

UniPlot Summary

//Function: This is a component of the ubiquinol-cytochrome c reductase complex (complex III or cytochrome b-c1 complex), which is part of the mitochondrial respiratory chain. The core protein 2 is required for the assembly of the complex.

//Subcellular location: Mitochondrion inner membrane; Peripheral membrane protein; Matrix side.

//Sequence similarities: Belongs to the peptidase M16 family. UQCRC2/QCR2 subfamily.