

KB554

For research use only

## Anti Human ABCF1 Polyclonal Antibody

**Code No.** KB554  
**Target** ABCF1  
**Category** Transporter  
**Gene ID** 23  
**Primary Source** HGNC:70  
**Synonyms** ABC27; ABC50; ABCF1

**Type** Polyclonal Antibody  
**Immunogen** Recombinant protein of full length Human ABCF1

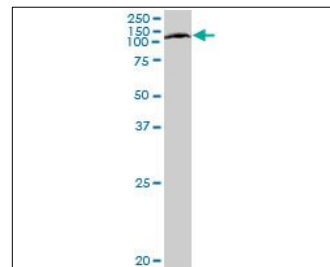
**Raised in** Mouse  
**Myeloma** -  
**Clone number** -  
**Purification** Protein A purified  
**Source** Mouse Serum  
**Isotype** -  
**Cross Reactivity** -  
**Label** Unlabeled  
**Concentration** 1 mg/mL  
**Contents (Volume)** 50 µg  
**Buffer** PBS, pH 7.2

**Storage** Store at - 20 °C long term, store at 4 °C short term. Avoid repeated freeze-thaw cycles.

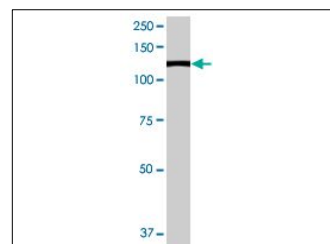
**Application** WB, IF

ELISA	WB	IHC	ICC
-	1.0	-	-
IP	FCM	IF	Neutralization
-	-	10	-

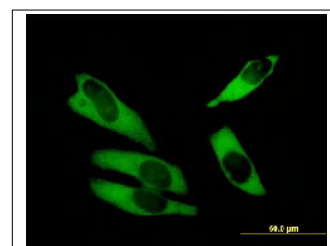
(µg/mL)



[WB] HepG2 cell lysate



[WB] ABCF1 transfected 293T cell lysate



[IF] HeLa cell

## Reference

1. Richard M., et al. "ABC50, a novel human ATP-binding cassette protein found in tumor necrosis factor- $\alpha$ -stimulated synoviocytes." *Genomics* 53:137-145(1998)
2. Mungall A.J., et al. "The DNA sequence and analysis of human chromosome 6." *Nature* 425:805-811(2003)
3. The MGC Project Team. "The status, quality, and expansion of the NIH full-length cDNA project: the Mammalian Gene Collection (MGC)." *Genome Res.* 14:2121-2127(2004)

## UniPlot Summary

//Function: May function in mRNA translation.

//Tissue specificity: Ubiquitous.

//Sequence similarities: Belongs to the ABC transporter superfamily. ABCF family. EF3 subfamily. Contains 2 ABC transporter domains.