

**KB550**

For research use only

# Anti Human EFEMP2 Polyclonal Antibody

**Code No.** KB550  
**Target** EFEMP2  
**Category** Cytoskelton  
**Gene ID** 30008  
**Primary Source** HGNC:3219  
**Synonyms** MBP1; UPH1; FBLN4; EFEMP2

**Type** Polyclonal Antibody  
**Immunogen** Recombinant protein of full length Human EFEMP2

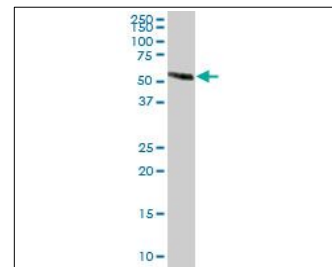
**Raised in** Mouse  
**Myeloma** -  
**Clone number** -  
**Purification** Protein A purified  
**Source** Mouse Serum  
**Isotype** -  
**Cross Reactivity** -  
**Label** Unlabeled  
**Concentration** 0.5 mg/mL  
**Contents (Volume)** 50 µg  
**Buffer** PBS, pH 7.2

**Storage** Store at - 20 °C long term, store at 4 °C short term. Avoid repeated freeze-thaw cycles.

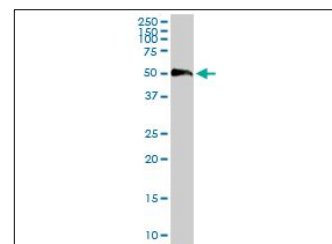
**Application** WB,FCM

ELISA	WB	IHC	ICC
-	1.0	-	-
IP	FCM	IF	Neutralization
-	1.0	-	-

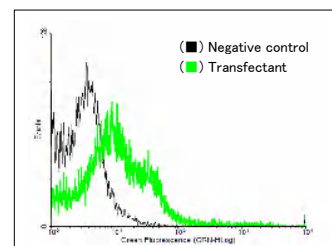
(µg/mL)



[WB] human kidney tissue lysate



[WB] EFEMP2 transfected 293T cell lysate



[FCM] EFEMP2 expressing 293 cells

## Reference

- Giltay R., et al. "Sequence, recombinant expression and tissue localization of two novel extracellular matrix proteins, fibulin-3 and fibulin-4." *Matrix Biol.* 18:469-480(1999)
- Katsanis N., et al. "Isolation of a paralog of the Doyne honeycomb retinal dystrophy gene from the multiple retinopathy critical region on 11q13." *Hum. Genet.* 106:66-72(2000)
- Clark H.F., et al. "The secreted protein discovery initiative (SPDI), a large-scale effort to identify novel human secreted and transmembrane proteins: a bioinformatics assessment." *Genome Res.* 13:2265-2270(2003)

## UniPlot Summary

//Sequence similarities: Belongs to the fibulin family. Contains 6 EGF-like domains.