

KB549

For research use only

Anti Human SLC16A1 Polyclonal Antibody

Code No. KB549
Target SLC16A1
Category Transporter
Gene ID 6566
Primary Source HGNC:10922
Synonyms MCT; HMF7; MCT1; FLJ36745; MGC44475; SLC16A1

Type Polyclonal Antibody
Immunogen Recombinant protein of full length Human SLC16A1

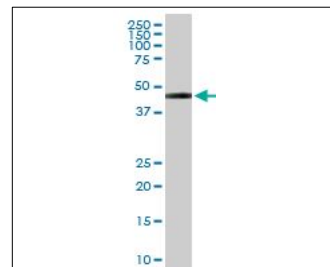
Raised in Mouse
Myeloma -
Clone number -
Purification Protein A purified
Source Mouse Serum
Isotype -
Cross Reactivity -
Label Unlabeled
Concentration 0.5 mg/mL
Contents (Volume) 50 µg
Buffer PBS, pH 7.2

Storage Store at - 20 °C long term, store at 4 °C short term. Avoid repeated freeze-thaw cycles.

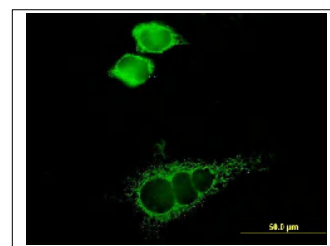
Application WB, IF

ELISA	WB	IHC	ICC
-	1.0	-	-
IP	FCM	IF	Neutralization
-	-	10	-

(µg/mL)



[WB] SLC16A1 transfected 293T cell lysate



[IF] HeLa cell

Reference

1. Garcia C.K., et al. "cDNA cloning of the human monocarboxylate transporter 1 and chromosomal localization of the SLC16A1 locus to 1p13.2-p12." *Genomics* 23:500-503(1994)
2. Bechtel S., et al. "The full-ORF clone resource of the German cDNA consortium." *BMC Genomics* 8:399-399(2007)
3. Olsen J.V., et al. "Global, in vivo, and site-specific phosphorylation dynamics in signaling networks." *Cell* 127:635-648(2006)

UniProt Summary

//Function: Proton-linked monocarboxylate transporter. Catalyzes the rapid transport across the plasma membrane of many monocarboxylates such as lactate, pyruvate, branched-chain oxo acids derived from leucine, valine and isoleucine, and the ketone bodies acetoacetate, beta-hydroxybutyrate and acetate.

//Subcellular location: Cell membrane; Multi-pass membrane protein.

//Tissue specificity: Widely expressed in normal and in cancer cells.

//Sequence similarities: Belongs to the major facilitator superfamily. Monocarboxylate porter (TC 2.A.1.13) family.