

KB546

For research use only

Anti Human SMAD6 Polyclonal Antibody

Code No. KB546
Target SMAD6
Category Signal transduction
Gene ID 4091
Primary Source HGNC:6772
Synonyms MADH6; MADH7; HsT17432; SMAD6

Type Polyclonal Antibody
Immunogen Recombinant protein of full length Human SMAD6

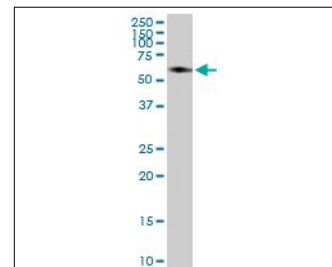
Raised in Mouse
Myeloma -
Clone number -
Purification Protein A purified
Source Mouse Serum
Isotype -
Cross Reactivity -
Label Unlabeled
Concentration 0.46 mg/mL
Contents (Volume) 50 µg
Buffer PBS, pH 7.2

Storage Store at - 20 °C long term, store at 4 °C short term. Avoid repeated freeze-thaw cycles.

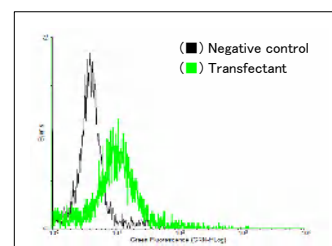
Application WB, FCM

ELISA	WB	IHC	ICC
-	1.0	-	-
IP	FCM	IF	Neutralization
-	1.0	-	-

(µg/mL)



[WB] SMAD6 transfected 293T cell lysate



[FCM] SMAD6 expressing 293 cells

Reference

1. Riggins G.J., et al. "Mad-related genes in the human." Nat. Genet. 13:347-349(1996)
2. Hata A., et al. "Smad6 inhibits BMP/Smad1 signaling by specifically competing with the Smad4 tumor suppressor." Genes Dev. 12:186-197(1998)
3. Afrakhte M., et al. "Induction of inhibitory Smad6 and Smad7 mRNA by TGF-beta family members." Biochem. Biophys. Res. Commun. 249:505-511(1998)

UniPlot Summary

//Function: Antagonist of signaling by TGF-beta (transforming growth factor) type 1 receptor superfamily members; has been shown to inhibit selectively BMP (bone morphogenetic proteins) signaling by competing with the co-SMAD SMAD4 for receptor-activated SMAD1. SMAD6 is an inhibitory SMAD (I-SMAD) or antagonistic SMAD. Binds to regulatory elements in target promoter regions.

//Subcellular location: Nucleus.

//Tissue specificity: Ubiquitous in various organs, with higher levels in lung. Isoform B is up-regulated in diseased heart tissue.

//Sequence similarities: Belongs to the dwarfin/SMAD family. Contains 1 MH1 (MAD homology 1) domain. Contains 1 MH2 (MAD homology 2) domain.