

KB544

For research use only

## Anti Human AKAP8 Polyclonal Antibody

**Code No.** KB544  
**Target** AKAP8  
**Category** Signal transduction  
**Gene ID** 10270  
**Primary Source** HGNC:378  
**Synonyms** AKAP95; DKFZp586B1222; AKAP8

**Type** Polyclonal Antibody  
**Immunogen** Recombinant protein of full length Human AKAP8

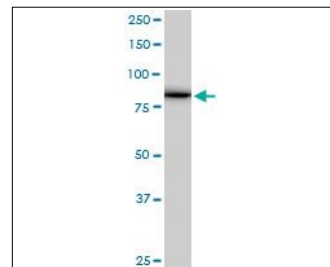
**Raised in** Mouse  
**Myeloma** -  
**Clone number** -  
**Purification** Protein A purified  
**Source** Mouse Serum  
**Isotype** -  
**Cross Reactivity** -  
**Label** Unlabeled  
**Concentration** 1 mg/mL  
**Contents (Volume)** 50 µg  
**Buffer** PBS, pH 7.2

**Storage** Store at - 20 °C long term, store at 4 °C short term. Avoid repeated freeze-thaw cycles.

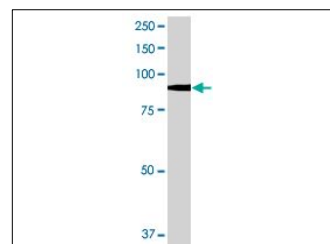
**Application** WB,IF

ELISA	WB	IHC	ICC
-	1.0	-	-
IP	FCM	IF	Neutralization
-	-	10	-

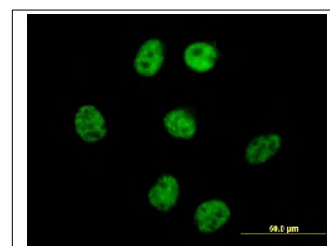
(µg/mL)



[WB] HepG2 cell lysate



[WB] AKAP8 transfected 293T cell lysate



[IF] HeLa cell

## Reference

1. Eide T., et al. "Molecular cloning, chromosomal localization, and cell cycle-dependent subcellular distribution of the A-kinase anchoring protein, AKAP95." *Exp. Cell Res.* 238:305-316(1998)
2. Grimwood J., et al. "The DNA sequence and biology of human chromosome 19." *Nature* 428:529-535(2004)
3. Beausoleil S.A., et al. "Large-scale characterization of HeLa cell nuclear phosphoproteins." *Proc. Natl. Acad. Sci. U.S.A.* 101:12130-12135(2004)

## UniPlot Summary

//Function: Anchoring protein that mediates the subcellular compartmentation of cAMP-dependent protein kinase (PKA type II).

//Subcellular location: Nucleus matrix. Note: Associated with the nuclear matrix. Redistributed and detached from condensed chromatin during mitosis.

//Tissue specificity: Highly expressed in heart, liver, skeletal muscle, kidney and pancreas.

//Sequence similarities: Belongs to the AKAP95 family.