

KB540

For research use only

Anti Human GRB7 Polyclonal Antibody

Code No. KB540
Target GRB7
Category Signal transduction
Gene ID 2886
Primary Source HGNC:4567
Synonyms GRB7

Type Polyclonal Antibody
Immunogen Recombinant protein of full length Human GRB7

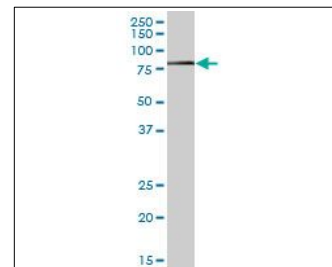
Raised in Mouse
Myeloma -
Clone number -
Purification Protein A purified
Source Mouse Serum
Isotype -
Cross Reactivity -
Label Unlabeled
Concentration 0.26 mg/mL
Contents (Volume) 50 µg
Buffer PBS, pH 7.2

Storage Store at - 20 °C long term, store at 4 °C short term. Avoid repeated freeze-thaw cycles.

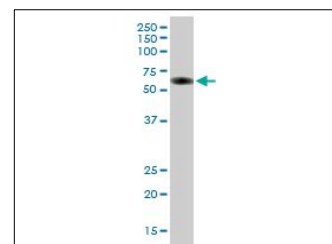
Application WB, FCM

| ELISA | WB | IHC | ICC |
|-------|-----|-----|----------------|
| - | 1.0 | - | - |
| IP | FCM | IF | Neutralization |
| - | 1.0 | - | - |

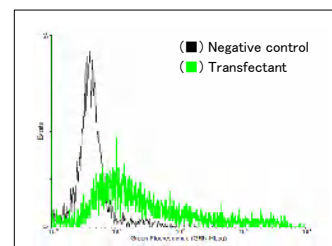
(µg/mL)



[WB] human stomach tissue lysate



[WB] GRB7 transfected 293T cell lysate



[FCM] GRB7 expressing 293 cells

Reference

1. Kishi T., et al. "Molecular cloning of human GRB-7 co-amplified with CAB1 and c-ERBB-2 in primary gastric cancer." *Biochem. Biophys. Res. Commun.* 232:5-9(1997)
2. Tanaka S., et al. "A novel variant of human Grb7 is associated with invasive esophageal carcinoma." *J. Clin. Invest.* 102:821-827(1998)
3. Tanaka S., et al. "Coexpression of Grb7 with epidermal growth factor receptor or Her2/erbB2 in human advanced esophageal carcinoma." *Cancer Res.* 57:28-31(1997)

UniPlot Summary

//Function: Interacts with the cytoplasmic domain of the epidermal growth factor receptor which is then inhibited. The interaction is mediated by the SH2 domain. Also binds to ERBB2.

//Sequence similarities: Belongs to the GRB7/10/14 family. Contains 1 PH domain. Contains 1 Ras-associating domain. Contains 1 SH2 domain.