

KB536

For research use only

Anti Human SH2D3A Polyclonal Antibody

Code No. KB536
Target SH2D3A
Category Signal transduction
Gene ID 10045
Primary Source HGNC:16885
Synonyms NSP1; SH2D3A

Type Polyclonal Antibody
Immunogen Recombinant protein of full length Human SH2D3A

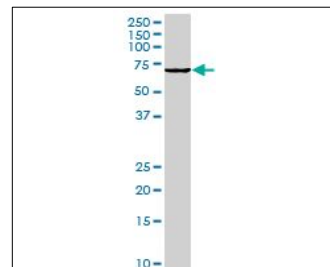
Raised in Mouse
Myeloma -
Clone number -
Purification Protein A purified
Source Mouse Serum
Isotype -
Cross Reactivity -
Label Unlabeled
Concentration 0.5 mg/mL
Contents (Volume) 50 µg
Buffer PBS, pH 7.2

Storage Store at - 20 °C long term, store at 4 °C short term. Avoid repeated freeze-thaw cycles.

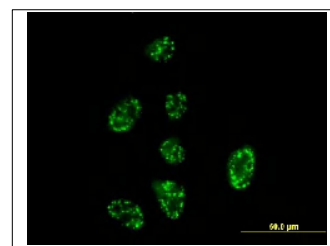
Application WB,IF

ELISA	WB	IHC	ICC
-	1.0	-	-
IP	FCM	IF	Neutralization
-	-	10	-

(µg/mL)



[WB] SH2D3A transfected 293T cell lysate



[IF] HeLa cell

Reference

1. Lu Y., et al. "NSP1 defines a novel family of adaptor proteins linking integrin and tyrosine kinase receptors to the c-Jun N-terminal kinase/stress-activated protein kinase signaling pathway." J. Biol. Chem. 274:10047-10052(1999)
2. Clark H.F., et al. "The secreted protein discovery initiative (SPDI), a large-scale effort to identify novel human secreted and transmembrane proteins: a bioinformatics assessment." Genome Res. 13:2265-2270(2003)
3. Ota T., et al. "Complete sequencing and characterization of 21,243 full-length human cDNAs." Nat. Genet. 36:40-45(2004)

UniPlot Summary

//Function: May play a role in JNK activation.

//Tissue specificity: Weakly expressed in placenta, fetal kidney, fetal lung, adult pancreas, adult kidney and adult lung.

//Sequence similarities: Contains 1 SH2 domain.