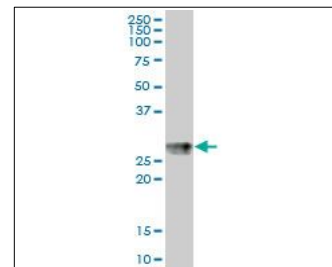


KB535

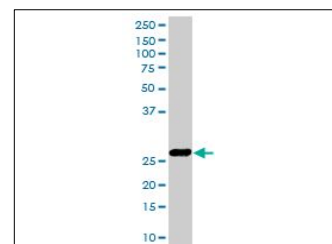
For research use only

Anti Human HLA-DPB1 Polyclonal Antibody

Code No.	KB535
Target	HLA-DPB1
Category	Immunology
Gene ID	3115
Primary Source	HGNC:4940
Synonyms	DPB1; HLA-DP1B; HLA-DPB1
Type	Polyclonal Antibody
Immunogen	Recombinant protein of full length Human HLA-DPB1
Raised in	Mouse
Myeloma	-
Clone number	-
Purification	Protein A purified
Source	Mouse Serum
Isotype	-
Cross Reactivity	-
Label	Unlabeled
Concentration	1 mg/mL
Contents (Volume)	50 µg
Buffer	PBS, pH 7.2



[WB] human spleen tissue lysate



[WB] HLA-DPB1 transfected 293T cell lysate

Storage Store at - 20 °C long term, store at 4 °C short term. Avoid repeated freeze-thaw cycles.

Application WB

ELISA	WB	IHC	ICC
-	1.0	-	-
IP	FCM	IF	Neutralization
-	-	-	-

(µg/mL)

Reference

1. Kelly A., et al. "Complete nucleotide sequence of a functional HLA-DP beta gene and the region between the DP beta 1 and DP alpha 1 genes: comparison of the 5' ends of HLA class II genes." *Nucleic Acids Res.* 13:1607-1621(1985)
2. Compagnone-Post P., et al. "The beta-chains of DP4 molecules from different haplotypes are encoded by the same gene." *Genomics* 2:8-13(1988)
3. Gustafsson K., et al. "Class II genes of the human major histocompatibility complex. Evolution of the DP region as deduced from nucleotide sequences of the four genes." *J. Biol. Chem.* 262:8778-8786(1987)

UniPlot Summary

//Subcellular location: Membrane; Single-pass type I membrane protein.

//Sequence similarities: Belongs to the MHC class II family. Contains 1 Ig-like C1-type (immunoglobulin-like) domain.