

KB534

For research use only

Anti Human HLA-A Polyclonal Antibody

Code No. KB534
Target HLA-A
Category Immunology
Gene ID 3105
Primary Source HGNC:4931
Synonyms HLAA; FLJ26655; HLA-A

Type Polyclonal Antibody
Immunogen Recombinant protein of full length Human HLA-A

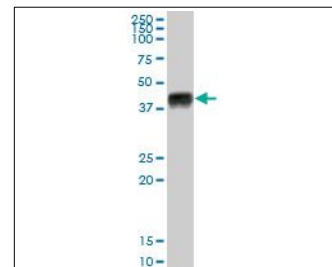
Raised in Mouse
Myeloma -
Clone number -
Purification Protein A purified
Source Mouse Serum
Isotype -
Cross Reactivity -
Label Unlabeled
Concentration 0.5 mg/mL
Contents (Volume) 50 µg
Buffer PBS, pH 7.2

Storage Store at - 20 °C long term, store at 4 °C short term. Avoid repeated freeze-thaw cycles.

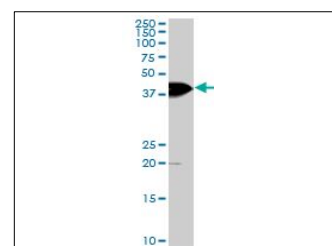
Application WB, FCM

ELISA	WB	IHC	ICC
-	1.0	-	-
IP	FCM	IF	Neutralization
-	1.0	-	-

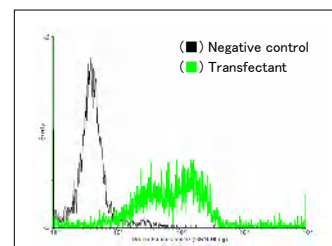
(µg/mL)



[WB] human spleen tissue lysate



[WB] HLA-A transfected 293T cell lysate



[FCM] HLA-A expressing 293 cells

Reference

1. Koller B.H., et al. "Cloning and complete sequence of an HLA-A2 gene: analysis of two HLA-A alleles at the nucleotide level." J. Immunol. 134:2727-2733(1985)
2. Cianetti L., et al. "Three new class I HLA alleles: structure of mRNAs and alternative mechanisms of processing." Immunogenetics 29:80-91(1989)
3. Ennis P.D., et al. "Rapid cloning of HLA-A,B cDNA by using the polymerase chain reaction: frequency and nature of errors produced in amplification." Proc. Natl. Acad. Sci. U.S.A. 87:2833-2837(1990)

UniPlot Summary

//Function: Involved in the presentation of foreign antigens to the immune system.

//Subcellular location: Membrane; Single-pass type I membrane protein.

//Sequence similarities: Belongs to the MHC class I family. Contains 1 Ig-like C1-type (immunoglobulin-like) domain.