

KB530

For research use only

Anti Human HLA-DQB1 Polyclonal Antibody

Code No. KB530
Target HLA-DQB1
Category Immunology
Gene ID 3119
Primary Source HGNC:4944
Synonyms IDDM1; CELIAC1; HLA-DQB; HLA-DQB1

Type Polyclonal Antibody
Immunogen Recombinant protein of full length Human HLA-DQB1

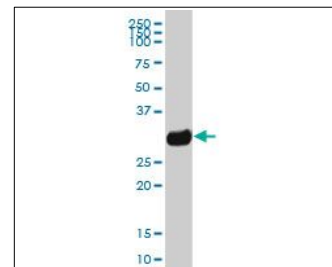
Raised in Mouse
Myeloma -
Clone number -
Purification Protein A purified
Source Mouse Serum
Isotype -
Cross Reactivity -
Label Unlabeled
Concentration 0.5 mg/mL
Contents (Volume) 50 µg
Buffer PBS, pH 7.2

Storage Store at - 20 °C long term, store at 4 °C short term. Avoid repeated freeze-thaw cycles.

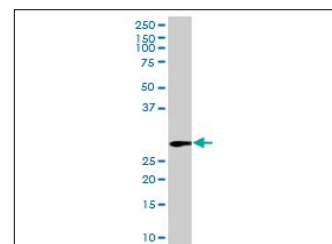
Application WB

ELISA	WB	IHC	ICC
-	1.0	-	-
IP	FCM	IF	Neutralization
-	-	-	-

(µg/mL)



[WB] human pancreas tissue lysate



[WB] HLA-DQB1 transfected 293T cell lysate

Reference

1. Lock C.B., et al. "MHC class II sequences of an HLA-DR2 narcoleptic." Immunogenetics 27:449-455(1988)
2. Hiraiwa A., et al. "Sequence analysis of HLA class II domains: characterization of the DQw3 family of DQB genes." Immunogenetics 29:186-190(1989)
3. Uryu N., et al. "No difference in the nucleotide sequence of the DQ beta beta 1 domain between narcoleptic and healthy individuals with DR2,Dw2." Hum. Immunol. 24:175-181(1989)

UniPlot Summary

//Subcellular location: Membrane; Single-pass type I membrane protein.

//Sequence similarities: Belongs to the MHC class II family. Contains 1 Ig-like C1-type (immunoglobulin-like) domain.