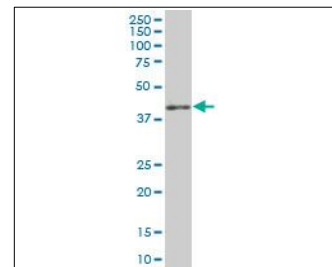


KB528

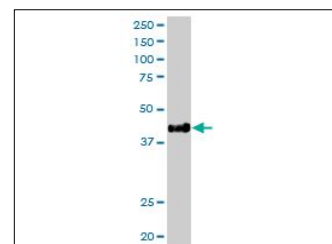
For research use only

Anti Human HLA-E Polyclonal Antibody

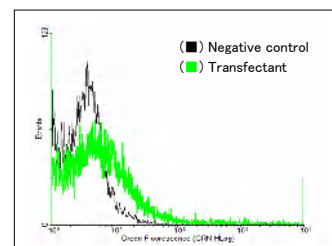
Code No.	KB528
Target	HLA-E
Category	Immunology
Gene ID	3133
Primary Source	HGNC:4962
Synonyms	MHC; QA1; EA1.2; EA2.1; HLA-6.2; DKFZp686P19218; HLA-E
Type	Polyclonal Antibody
Immunogen	Recombinant protein of full length Human HLA-E
Raised in	Mouse
Myeloma	-
Clone number	-
Purification	Protein A purified
Source	Mouse Serum
Isotype	-
Cross Reactivity	-
Label	Unlabeled
Concentration	0.5 mg/mL
Contents (Volume)	50 µg
Buffer	PBS, pH 7.2



[WB] human spleen tissue lysate



[WB] HLA-E transfected 293T cell lysate



[FCM] HLA-E expressing 293 cells

Storage Store at - 20 °C long term, store at 4 °C short term. Avoid repeated freeze-thaw cycles.

Application WB,FCM

ELISA	WB	IHC	ICC
-	1.0	-	-
IP	FCM	IF	Neutralization
-	1.0	-	-

(µg/mL)

Reference

1. Mizuno S., et al. "Isolation and nucleotide sequence of a cDNA clone encoding a novel HLA class I gene." J. Immunol. 140:4024-4030(1988)
2. Ulbrecht M., et al. "Cell surface expression of HLA-E: interaction with human beta-2 microglobulin and allelic differences." Eur. J. Immunol. 29:537-547(1999)
3. The MGC Project Team. "The status, quality, and expansion of the NIH full-length cDNA project: the Mammalian Gene Collection (MGC)." Genome Res. 14:2121-2127(2004)

UniPlot Summary

//Function: Preferably binds to a peptide derived from the signal sequence of most HLA-A, -B, -C and -G molecules.

//Subcellular location: Membrane; Single-pass type I membrane protein.

//Polymorphism The following alleles of E-1 are known: E*0101, E*0102, E*0103 and E*0104. The sequence shown is that of E*0101.

//Sequence similarities: Belongs to the MHC class I family. Contains 1 Ig-like C1-type (immunoglobulin-like) domain.