

KB515

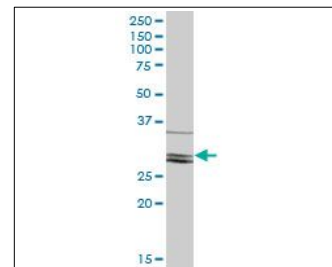
For research use only

Anti Human CLIC2 Polyclonal Antibody

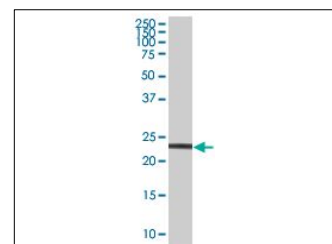
Code No. KB515
Target CLIC2
Category Transporter
Gene ID 1193
Primary Source HGNC:2063
Synonyms CLIC2b; XAP121; CLIC2

Type Polyclonal Antibody
Immunogen Recombinant protein of full length Human CLIC2

Raised in Mouse
Myeloma -
Clone number -
Purification Protein A purified
Source Mouse Serum
Isotype -
Cross Reactivity -
Label Unlabeled
Concentration 1 mg/mL
Contents (Volume) 50 µg
Buffer PBS, pH 7.2



[WB] human spleen tissue lysate



[WB] CLIC2 transfected 293T cell lysate

Storage Store at - 20 °C long term, store at 4 °C short term. Avoid repeated freeze-thaw cycles.

Application WB

ELISA	WB	IHC	ICC
-	1.0	-	-
IP	FCM	IF	Neutralization
-	-	-	-

(µg/mL)

Reference

1. Heiss N.S., et al. "Genomic structure of a novel chloride channel gene, CLIC2, in Xq28." *Genomics* 45:224-228(1997)
2. Ross M.T., et al. "The DNA sequence of the human X chromosome." *Nature* 434:325-337(2005)
3. The MGC Project Team. "The status, quality, and expansion of the NIH full-length cDNA project: the Mammalian Gene Collection (MGC)." *Genome Res.* 14:2121-2127(2004)

UniProt Summary

//Function: Can insert into membranes and form chloride ion channels. Channel activity depends on the pH. Membrane insertion seems to be redox-regulated and may occur only under oxydizing conditions. Modulates the activity of RYR2 and inhibits calcium influx.

//Subcellular location: Cytoplasm. Membrane; Single-pass membrane protein Probable. Note: Exists both as soluble cytoplasmic protein and as membrane protein with probably a single transmembrane domain.

//Tissue specificity: Detected in adult brain, heart, liver, lung, spleen, stomach and testis. Expressed in fetal liver and adult skeletal muscle.

//Sequence similarities: Belongs to the chloride channel CLIC family. Contains 1 GST C-terminal domain.