

KB507

For research use only

Anti Human GPRC5C Polyclonal Antibody

Code No. KB507
Target GPRC5C
Category GPCR
Gene ID 55890
Primary Source HGNC:13309
Synonyms RAIG3; RAIG-3; MGC131820; GPRC5C

Type Polyclonal Antibody
Immunogen Recombinant protein of full length Human GPRC5C

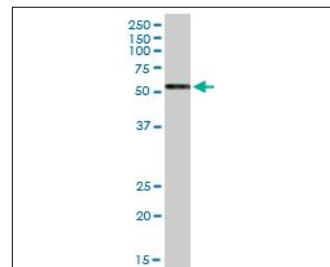
Raised in Mouse
Myeloma -
Clone number -
Purification Protein A purified
Source Mouse Serum
Isotype -
Cross Reactivity -
Label Unlabeled
Concentration 1 mg/mL
Contents (Volume) 50 µg
Buffer PBS, pH 7.2

Storage Store at - 20 °C long term, store at 4 °C short term. Avoid repeated freeze-thaw cycles.

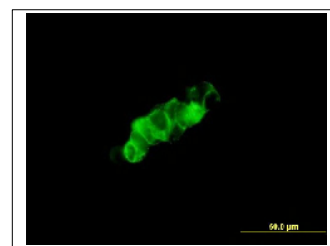
Application WB,IF,FCM

ELISA	WB	IHC	ICC
-	1.0	-	-
IP	FCM	IF	Neutralization
-	1.0	1.0	-

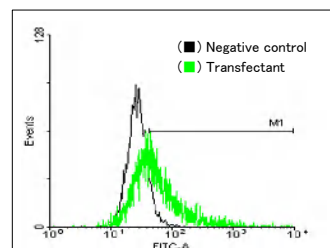
(µg/mL)



[WB] GPRC5C transfected 293T cell lysate



[IF] 293 cell



[FCM] GPRC5C expressing 293 cells

Reference

1. Robbins M.J., et al. "Molecular cloning and characterization of two novel retinoic acid-inducible orphan G-protein-coupled receptors (GPRC5B and GPRC5C)." *Genomics* 67:8-18(2000)
2. Braeuner-Osborne H., et al. "Cloning and characterization of a human orphan family C G-protein coupled receptor GPRC5D." *Biochim. Biophys. Acta* 1518:237-248(2001)
3. Ota T., et al. "Complete sequencing and characterization of 21,243 full-length human cDNAs." *Nat. Genet.* 36:40-45(2004)

UniPlot Summary

//Function: This retinoic acid-inducible G-protein coupled receptor provide evidence for a possible interaction between retinoid and G-protein signaling pathways.

//Subcellular location: Cell membrane; Multi-pass membrane protein. Cytoplasmic vesicle membrane; Multi-pass membrane protein. Note: Localized in the plasma membrane and perinuclear vesicles.

//Tissue specificity: Expression is highest in the periphery, particularly in the stomach, but also in the kidney, liver, pancreas, and prostate. In brain, levels of expression are generally lower than in the periphery, with the exception of cerebellum, spinal cord, and dorsal root ganglia (DRG).

//Sequence similarities: Belongs to the G-protein coupled receptor 3 family.