

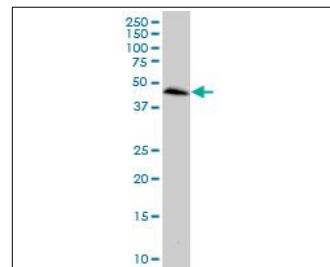
KB501

For research use only

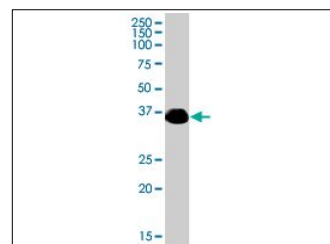
Anti Human CCRL2 Polyclonal Antibody

Code No. KB501
Target CCRL2
Category GPCR
Gene ID 9034
Primary Source HGNC:1612
Synonyms HCR; CKRX; CRAM-A; CRAM-B; FLJ55815; MGC34104; MGC116710; CCRL2
Type Polyclonal Antibody
Immunogen Recombinant protein of full length Human CCRL2

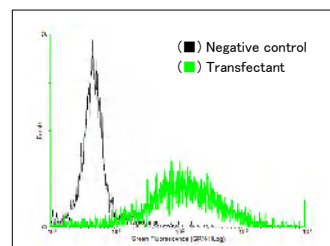
Raised in Mouse
Myeloma -
Clone number -
Purification Protein A purified
Source Mouse Serum
Isotype -
Cross Reactivity Mouse
Label Unlabeled
Concentration 0.5 mg/mL
Contents (Volume) 50 µg
Buffer PBS, pH 7.2



[WB] Raw 264.7 cell lysate



[WB] CCRL2 transfected 293T cell lysate



[FCM] CCRL2 expressing 293 cells

Storage Store at - 20 °C long term, store at 4 °C short term. Avoid repeated freeze-thaw cycles.

Application WB,FCM

ELISA	WB	IHC	ICC
-	1.0	-	-
IP	FCM	IF	Neutralization
-	1.0	-	-

(µg/mL)

Reference

1. Fan P., et al. "Cloning and characterization of a novel human chemokine receptor." Biochem. Biophys. Res. Commun. 243:264-268(1998)

UniPlot Summary

//Function: Receptor for CCL2, CCL5, CCL7 and CCL8.

//Subcellular location: Cell membrane; Multi-pass membrane protein.

//Tissue specificity: Expressed abundantly in immunal tissues such as spleen, fetal liver, lymph node and bone marrow. Strong expression also in lung and heart.