

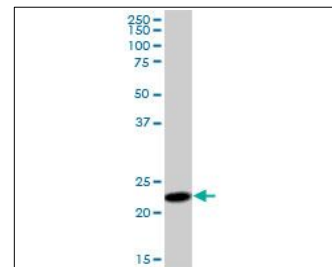
KB499

For research use only

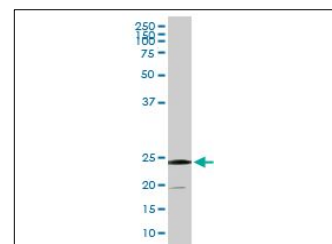
Anti Human SSR2 Polyclonal Antibody

Code No. KB499
Target SSR2
Category Signal transduction
Gene ID 6746
Primary Source HGNC:11324
Synonyms TLAP; HSD25; TRAPB; TRAP-BETA; DKFZp686F19123; SSR2
Type Polyclonal Antibody
Immunogen Recombinant protein of full length Human SSR2

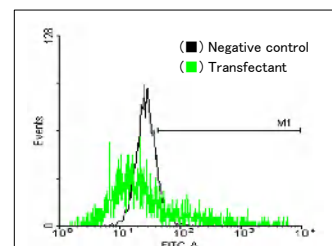
Raised in Mouse
Myeloma -
Clone number -
Purification Protein A purified
Source Mouse Serum
Isotype -
Cross Reactivity -
Label Unlabeled
Concentration 1 mg/mL
Contents (Volume) 50 µg
Buffer PBS, pH 7.2



[WB] human placenta tissue lysate



[WB] SSR2 transfected 293T cell lysate



[FCM] SSR2 expressing 293 cells

Storage Store at - 20 °C long term, store at 4 °C short term. Avoid repeated freeze-thaw cycles.

Application WB, FCM

| ELISA | WB | IHC | ICC |
|-------|-----|-----|----------------|
| - | 1.0 | - | - |
| IP | FCM | IF | Neutralization |
| - | 1.0 | - | - |

(µg/mL)

Reference

1. Bodescot M., et al. "Cloning and sequence analysis of the beta subunit of the human translocon-associated protein." Biochim. Biophys. Acta 1217:101-102(1994)
2. Chinen K., et al. "Isolation and mapping of the human beta-signal sequence receptor gene (SSR2)." Cytogenet. Cell Genet. 70:215-217(1995)

UniPlot Summary

//Function: TRAP proteins are part of a complex whose function is to bind calcium to the ER membrane and thereby regulate the retention of ER resident proteins.
//Subcellular location: Endoplasmic reticulum membrane; Single-pass type I membrane protein.
//Sequence similarities: Belongs to the TRAP-beta family.