

KB497

For research use only

Anti Human ROM1 Polyclonal Antibody

Code No. KB497
Target ROM1
Category Others
Gene ID 6094
Primary Source HGNC:10254
Synonyms ROM; RP7; ROSP1; TSPAN23; ROM1

Type Polyclonal Antibody
Immunogen Recombinant protein of full length Human ROM1

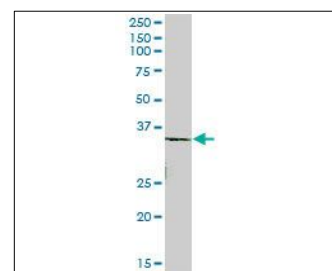
Raised in Mouse
Myeloma -
Clone number -
Purification Protein A purified
Source Mouse Serum
Isotype -
Cross Reactivity -
Label Unlabeled
Concentration 0.5 mg/mL
Contents (Volume) 50 µg
Buffer PBS, pH 7.2

Storage Store at - 20 °C long term, store at 4 °C short term. Avoid repeated freeze-thaw cycles.

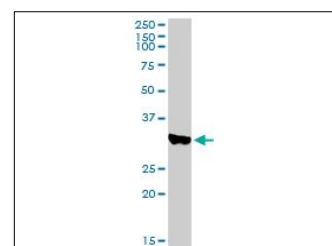
Application WB,FCM

ELISA	WB	IHC	ICC
-	1.0	-	-
IP	FCM	IF	Neutralization
-	1.0	-	-

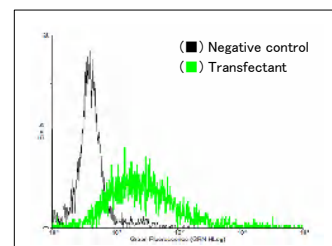
(µg/mL)



[WB] human kidney tissue lysate



[WB] ROM1 transfected 293T cell lysate



[FCM] ROM1 expressing 293 cells

Reference

1. Bascom R.A., et al. "Cloning of the cDNA for a novel photoreceptor membrane protein (rom-1) identifies a disk rim protein family implicated in human retinopathies." *Neuron* 8:1171-1184(1992)
2. Bascom R.A., et al. "Cloning of the human and murine ROM1 genes: genomic organization and sequence conservation." *Hum. Mol. Genet.* 2:385-391(1993)
3. Ota T., et al. "Complete sequencing and characterization of 21,243 full-length human cDNAs." *Nat. Genet.* 36:40-45(2004)

UniPlot Summary

//Function: May function as an adhesion molecule involved in stabilization and compaction of outer segment disks or in the maintenance of the curvature of the rim. It is essential for disk morphogenesis.
//Subcellular location: Membrane; Multi-pass membrane protein.
//Tissue specificity: Retina (photoreceptor). In rim region of ROS (rod outer segment) disks.
//Sequence similarities: Belongs to the PRPH2/ROM1 family.