

KB495

For research use only

## Anti Human GPR143 Polyclonal Antibody

**Code No.** KB495  
**Target** GPR143  
**Category** GPCR  
**Gene ID** 4935  
**Primary Source** HGNC:20145  
**Synonyms** OA1; GPR143

**Type** Polyclonal Antibody  
**Immunogen** Recombinant protein of full length Human GPR143

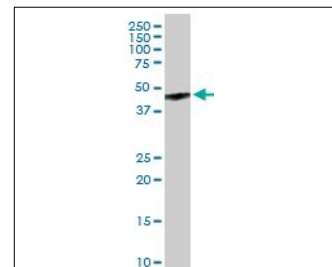
**Raised in** Mouse  
**Myeloma** -  
**Clone number** -  
**Purification** Protein A purified  
**Source** Mouse Serum  
**Isotype** -  
**Cross Reactivity** -  
**Label** Unlabeled  
**Concentration** 1 mg/mL  
**Contents (Volume)** 50 µg  
**Buffer** PBS, pH 7.2

**Storage** Store at - 20 °C long term, store at 4 °C short term. Avoid repeated freeze-thaw cycles.

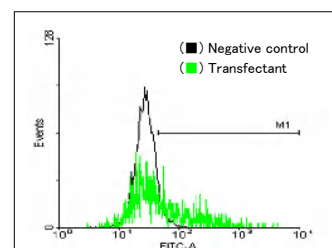
**Application** WB, FCM

ELISA	WB	IHC	ICC
-	1.0	-	-
IP	FCM	IF	Neutralization
-	1.0	-	-

(µg/mL)



[WB] GPR143 transfected 293T cell lysate



[FCM] GPR143 expressing 293 cells

## Reference

1. Bassi M.T., et al. "Cloning of the gene for ocular albinism type 1 from the distal short arm of the X chromosome." Nat. Genet. 10:13-19(1995)
2. Ross M.T., et al. "The DNA sequence of the human X chromosome." Nature 434:325-337(2005)
3. The MGC Project Team. "The status, quality, and expansion of the NIH full-length cDNA project: the Mammalian Gene Collection (MGC)." Genome Res. 14:2121-2127(2004)

## UniPlot Summary

//Function: Not known; binds heterotrimeric G proteins.

//Subcellular location: Melanosome membrane; Multi-pass membrane protein. Note: Targeted to intracellular organelles, namely the melanosomes in pigment cells.

//Tissue specificity: Exclusively expressed in pigment cells.

//Sequence similarities: Belongs to the G-protein coupled receptor OA family.