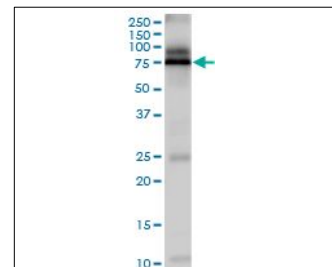


KB483

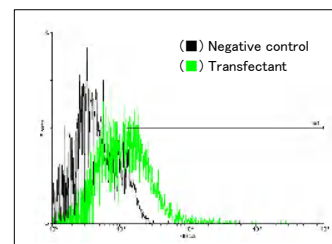
For research use only

Anti Human ABCG2 Polyclonal Antibody

Code No.	KB483
Target	ABCG2
Category	Transporter
Gene ID	9429
Primary Source	HGNC:74
Synonyms	MRX; MXR; ABCP; BCRP; BMDP; MXR1; ABC15; BCRP1; CD338; CDw338; EST157481; MGC102821; ABCG2
Type	Polyclonal Antibody
Immunogen	Recombinant protein of full length Human ABCG2
Raised in	Mouse
Myeloma	-
Clone number	-
Purification	Protein A purified
Source	Mouse Serum
Isotype	-
Cross Reactivity	-
Label	Unlabeled
Concentration	0.5 mg/mL
Contents (Volume)	50 µg
Buffer	PBS, pH 7.2



[WB] ABCG2 transfected 293T cell lysate



[FCM] ABCG2 expressing 293 cells

Storage Store at - 20 °C long term, store at 4 °C short term. Avoid repeated freeze-thaw cycles.

Application WB, FCM

ELISA	WB	IHC	ICC
-	1.0	-	-
IP	FCM	IF	Neutralization
-	1.0	-	-

(µg/mL)

Reference

1. Allikmets R., et al. "A human placenta-specific ATP-binding cassette gene (ABCP) on chromosome 4q22 that is involved in multidrug resistance." *Cancer Res.* 58:5337-5339(1998)
2. Doyle L.A., et al. "A multidrug resistance transporter from human MCF-7 breast cancer cells." *Proc. Natl. Acad. Sci. U.S.A.* 95:15665-15670(1998)
3. Doyle L.A., et al. Erratum. *Proc. Natl. Acad. Sci. U.S.A.* 96:2569-2569(1999)

UniPlot Summary

//Function: Xenobiotic transporter that may play an important role in the exclusion of xenobiotics from the brain. May be involved in brain-to-blood efflux. Appears to play a major role in the multidrug resistance phenotype of several cancer cell lines. When overexpressed, the transfected cells become resistant to mitoxantrone, daunorubicin and doxorubicin, display diminished intracellular accumulation of daunorubicin, and manifest an ATP-dependent increase in the efflux of rhodamine 123.

//Subcellular location: Cell membrane; Multi-pass membrane protein.

//Tissue specificity: Highly expressed in placenta. Low expression in small intestine, liver and colon.

//Sequence similarities: Belongs to the ABC transporter superfamily. ABCG family. Eye pigment precursor importer (TC 3.A.1.204) subfamily. Contains 1 ABC transmembrane type-2 domain. Contains 1 ABC transporter domain.