

KB482

For research use only

## Anti Human IL1R2 Polyclonal Antibody

**Code No.** KB482  
**Target** IL1R2  
**Category** Immunology  
**Gene ID** 7850  
**Primary Source** HGNC:5994  
**Synonyms** IL1RB; CD121b; MGC47725; IL1R2

**Type** Polyclonal Antibody  
**Immunogen** Recombinant protein of full length Human IL1R2

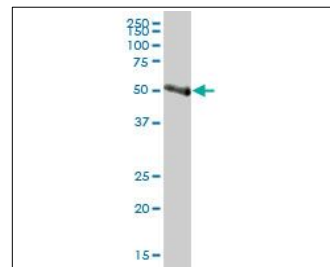
**Raised in** Mouse  
**Myeloma** -  
**Clone number** -  
**Purification** Protein A purified  
**Source** Mouse Serum  
**Isotype** -  
**Cross Reactivity** -  
**Label** Unlabeled  
**Concentration** 1 mg/mL  
**Contents (Volume)** 50 µg  
**Buffer** PBS, pH 7.2

**Storage** Store at - 20 °C long term, store at 4 °C short term. Avoid repeated freeze-thaw cycles.

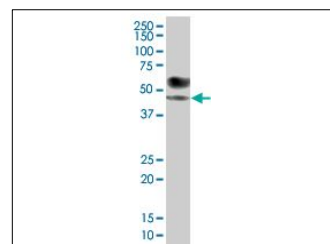
**Application** WB, FCM

ELISA	WB	IHC	ICC
-	1.0	-	-
IP	FCM	IF	Neutralization
-	1.0	-	-

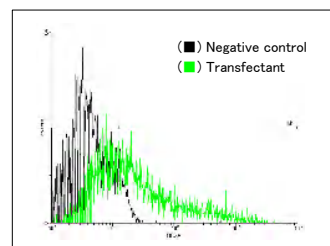
(µg/mL)



[WB] human kidney tissue lysate



[WB] IL1R2 transfected 293T cell lysate



[FCM] IL1R2 expressing 293 cells

## Reference

- McMahan C.J., et al. "A novel IL-1 receptor, cloned from B cells by mammalian expression, is expressed in many cell types." EMBO J. 10:2821-2832(1991)
- Hillier L.W., et al. "Generation and annotation of the DNA sequences of human chromosomes 2 and 4." Nature 434:724-731(2005)
- The MGC Project Team. "The status, quality, and expansion of the NIH full-length cDNA project: the Mammalian Gene Collection (MGC)." Genome Res. 14:2121-2127(2004)

## UniPlot Summary

//Function: Receptor for interleukin-1 alpha (IL-1A), beta (IL-1B), and interleukin-1 receptor antagonist protein (IL-1ra).

//Subcellular location: Membrane; Single-pass type I membrane protein.

//Sequence similarities: Belongs to the interleukin-1 receptor family. Contains 3 Ig-like C2-type (immunoglobulin-like) domains.