

KB480

For research use only

Anti Human MPL Polyclonal Antibody

Code No. KB480
Target MPL
Category Cancer
Gene ID 4352
Primary Source HGNC:7217
Synonyms MPLV; TPOR; C-MPL; CD110; MPL

Type Polyclonal Antibody
Immunogen Recombinant protein of full length Human MPL

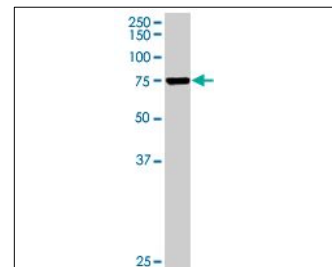
Raised in Mouse
Myeloma -
Clone number -
Purification Protein A purified
Source Mouse Serum
Isotype -
Cross Reactivity -
Label Unlabeled
Concentration 0.47 mg/mL
Contents (Volume) 50 µg
Buffer PBS, pH 7.2

Storage Store at - 20 °C long term, store at 4 °C short term. Avoid repeated freeze-thaw cycles.

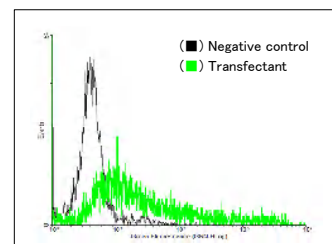
Application WB, FCM

ELISA	WB	IHC	ICC
-	1.0	-	-
IP	FCM	IF	Neutralization
-	1.0	-	-

(µg/mL)



[WB] MPL transfected 293T cell lysate



[FCM] MPL expressing 293 cells

Reference

1. Vigon I., et al. "Molecular cloning and characterization of MPL, the human homolog of the v-mpl oncogene: identification of a member of the hematopoietic growth factor receptor superfamily." *Proc. Natl. Acad. Sci. U.S.A.* 89:5640-5644(1992)
2. Mignotte V., et al. "Structure and transcription of the human c-mpl gene (MPL)." *Genomics* 20:5-12(1994)
3. Cargill M., et al. "Characterization of single-nucleotide polymorphisms in coding regions of human genes." *Nat. Genet.* 22:231-238(1999)

UniPlot Summary

//Function: Receptor for thrombopoietin. May represent a regulatory molecule specific for TPO-R-dependent immune responses.

//Subcellular location: Membrane; Single-pass type I membrane protein.

//Tissue specificity: Expressed at a low level in a large number of cells of hematopoietic origin. Isoform 1 and isoform 2 are always found to be coexpressed.

//Sequence similarities: Belongs to the type I cytokine receptor family. Type 1 subfamily. Contains 2 fibronectin type-III domains.