

KB477

For research use only

Anti Human LAMP2 Polyclonal Antibody

Code No. KB477
Target LAMP2
Category Others
Gene ID 3920
Primary Source HGNC:6501
Synonyms LAMPB; CD107b; LGP110; LAMP2

Type Polyclonal Antibody
Immunogen Recombinant protein of full length Human LAMP2

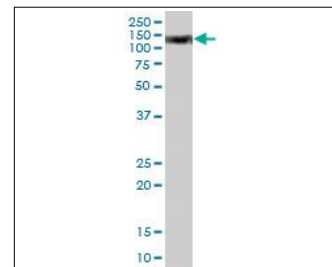
Raised in Mouse
Myeloma -
Clone number -
Purification Protein A purified
Source Mouse Serum
Isotype -
Cross Reactivity -
Label Unlabeled
Concentration 0.49 mg/mL
Contents (Volume) 50 µg
Buffer PBS, pH 7.2

Storage Store at - 20 °C long term, store at 4 °C short term. Avoid repeated freeze-thaw cycles.

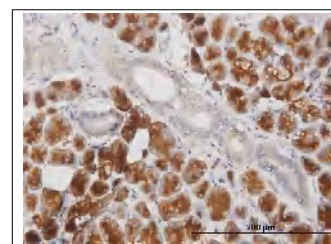
Application WB,IHC,IF,FCM

| ELISA | WB | IHC | ICC |
|-------|-----|-----|----------------|
| - | 1.0 | 3.0 | - |
| IP | FCM | IF | Neutralization |
| - | 1.0 | 10 | - |

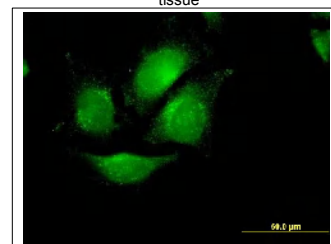
(µg/mL)



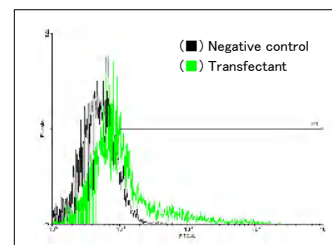
[WB] human liver tissue lysate



[IHC] Paraffin embedded human salivary gland tissue



[IF] HeLa cell



[FCM] LAMP2 expressing 293 cells

Reference

1. Fukuda M., et al. "Cloning of cDNAs encoding human lysosomal membrane glycoproteins, h-lamp-1 and h-lamp-2. Comparison of their deduced amino acid sequences." J. Biol. Chem. 263:18920-18928(1988)
2. Konecki D.S., et al. "Complete cDNA sequence of human lysosome-associated membrane protein-2." Biochem. Biophys. Res. Commun. 205:1-5(1994)
3. Konecki D.S., et al. "An alternatively spliced form of the human lysosome-associated membrane protein-2 gene is expressed in a tissue-specific manner." Biochem. Biophys. Res. Commun. 215:757-767(1995)

UniPlot Summary

//Function: Implicated in tumor cell metastasis. May function in protection of the lysosomal membrane from autodigestion, maintenance of the acidic environment of the lysosome, adhesion when expressed on the cell surface (plasma membrane), and inter- and intracellular signal transduction.

//Subcellular location: Cell membrane, Endosome membrane, Lysosome membrane; Single-pass type I membrane protein.

//Tissue specificity: Isoform LAMP-2A is highly expressed in placenta, lung and liver, less in kidney and pancreas, low in brain and skeletal muscle. Isoform LAMP-2B is highly expressed in skeletal muscle, less in brain, placenta, lung, kidney and pancreas, very low in liver.

//Sequence similarities: Belongs to the LAMP family.