

KB473

For research use only

Anti Human IL2RB Polyclonal Antibody

Code No. KB473
Target IL2RB
Category Immunology
Gene ID 3560
Primary Source HGNC:6009
Synonyms CD122; P70-75; IL2RB

Type Polyclonal Antibody
Immunogen Recombinant protein of full length Human IL2RB

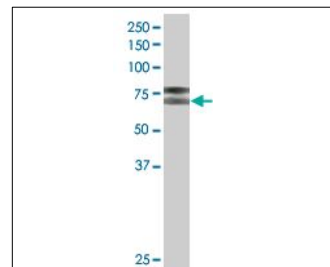
Raised in Mouse
Myeloma -
Clone number -
Purification Protein A purified
Source Mouse Serum
Isotype -
Cross Reactivity -
Label Unlabeled
Concentration 1 mg/mL
Contents (Volume) 50 µg
Buffer PBS, pH 7.2

Storage Store at - 20 °C long term, store at 4 °C short term. Avoid repeated freeze-thaw cycles.

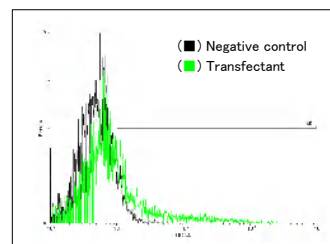
Application WB, FCM

ELISA	WB	IHC	ICC
-	1.0	-	-
IP	FCM	IF	Neutralization
-	1.0	-	-

(µg/mL)



[WB] IL2RB transfected 293T cell lysate



[FCM] IL2RB expressing 293 cells

Reference

1. Hatakeyama M., et al. "Interleukin-2 receptor beta chain gene: generation of three receptor forms by cloned human alpha and beta chain cDNA's." Science 244:551-556(1989)
2. Collins J.E., et al. "A genome annotation-driven approach to cloning the human ORFeome." Genome Biol. 5:R84(2004)
3. Dunham I., et al. "The DNA sequence of human chromosome 22." Nature 402:489-495(1999)

UniProt Summary

//Function: Receptor for interleukin-2. This beta subunit is involved in receptor mediated endocytosis and transduces the mitogenic signals of IL2.

//Subcellular location: Membrane; Single-pass type I membrane protein.

//Sequence similarities: Belongs to the type I cytokine receptor family. Type 4 subfamily. Contains 1 fibronectin type-III domain.