

KB470

For research use only

Anti Human F3 Polyclonal Antibody

Code No. KB470
Target F3
Category Others
Gene ID 2152
Primary Source HGNC:3541
Synonyms TF; TFA; CD142; F3

Type Polyclonal Antibody
Immunogen Recombinant protein of full length Human F3

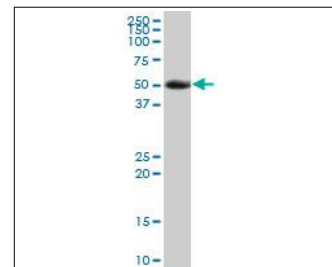
Raised in Mouse
Myeloma -
Clone number -
Purification Protein A purified
Source Mouse Serum
Isotype -
Cross Reactivity -
Label Unlabeled
Concentration 0.5 mg/mL
Contents (Volume) 50 µg
Buffer PBS, pH 7.2

Storage Store at - 20 °C long term, store at 4 °C short term. Avoid repeated freeze-thaw cycles.

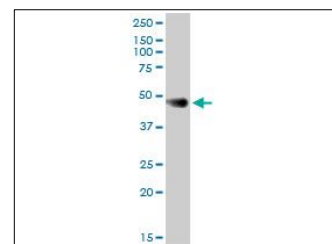
Application WB,FCM

ELISA	WB	IHC	ICC
-	1.0	-	-
IP	FCM	IF	Neutralization
-	1.0	-	-

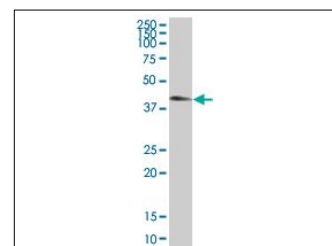
(µg/mL)



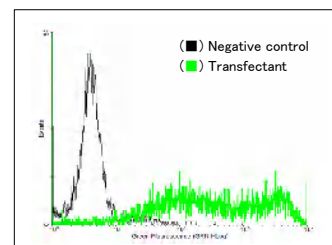
[WB] human pancreas tissue lysate



[WB] A-431 cell lysate



[WB] F3 transfected 293T cell lysate



[FCM] F3 expressing 293 cells

Reference

- Scarpati E.M., et al. "Human tissue factor: cDNA sequence and chromosome localization of the gene." *Biochemistry* 26:5234-5238(1987)
- Morrissey J.H., et al. "Molecular cloning of the cDNA for tissue factor, the cellular receptor for the initiation of the coagulation protease cascade." *Cell* 50:129-135(1987)
- Spicer E.K., et al. "Isolation of cDNA clones coding for human tissue factor: primary structure of the protein and cDNA." *Proc. Natl. Acad. Sci. U.S.A.* 84:5148-5152(1987)

UniPlot Summary

//Function: Initiates blood coagulation by forming a complex with circulating factor VII or VIIa. The [TF:VIIa] complex activates factors IX or X by specific limited proteolysis. TF plays a role in normal hemostasis by initiating the cell-surface assembly and propagation of the coagulation protease cascade.

//Subcellular location: Membrane; Single-pass type I membrane protein.

//Sequence similarities: Belongs to the tissue factor family.