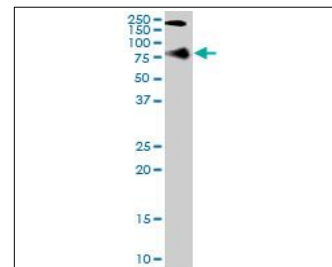


**KB468**

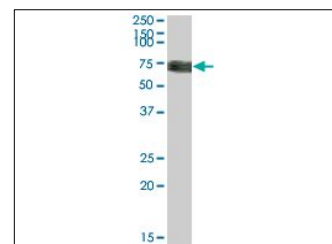
For research use only

# Anti Human CEACAM5 Polyclonal Antibody

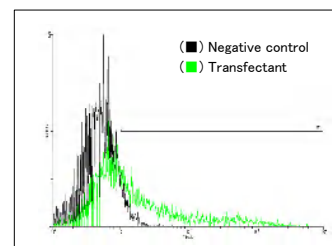
<b>Code No.</b>	KB468
<b>Target</b>	CEACAM5
<b>Category</b>	Cancer
<b>Gene ID</b>	1048
<b>Primary Source</b>	HGNC:1817
<b>Synonyms</b>	CEA; CD66e; DKFZp781M2392; CEACAM5
<b>Type</b>	Polyclonal Antibody
<b>Immunogen</b>	Recombinant protein of full length Human CEACAM5
<b>Raised in</b>	Mouse
<b>Myeloma</b>	-
<b>Clone number</b>	-
<b>Purification</b>	Protein A purified
<b>Source</b>	Mouse Serum
<b>Isotype</b>	-
<b>Cross Reactivity</b>	-
<b>Label</b>	Unlabeled
<b>Concentration</b>	0.5 mg/mL
<b>Contents (Volume)</b>	50 µg
<b>Buffer</b>	PBS, pH 7.2



[WB] A-549 cell lysate



[WB] CEACAM5 transfected 293T cell lysate



[FCM] CEACAM5 expressing 293 cells

**Storage** Store at - 20 °C long term, store at 4 °C short term. Avoid repeated freeze-thaw cycles.

**Application** WB,FCM

ELISA	WB	IHC	ICC
-	1.0	-	-
IP	FCM	IF	Neutralization
-	1.0	-	-

(µg/mL)

## Reference

- Schrewe H., et al. "Cloning of the complete gene for carcinoembryonic antigen: analysis of its promoter indicates a region conveying cell type-specific expression." Mol. Cell. Biol. 10:2738-2748(1990)
- Beauchemin N., et al. "Isolation and characterization of full-length functional cDNA clones for human carcinoembryonic antigen." Mol. Cell. Biol. 7:3221-3230(1987)
- Barnett T., et al. "Carcinoembryonic antigen family: characterization of cDNAs coding for NCA and CEA and suggestion of nonrandom sequence variation in their conserved loop-domains." Genomics 3:59-66(1988)

## UniPlot Summary

//Function: Involved in lymphocyte proliferation and functions as a signal transmitting receptor in lymphocytes, natural killer (NK) cells, and platelets.

//Subcellular location: Membrane; Single-pass type II membrane protein.

//Tissue specificity: Expressed on the surface of activated T-cells, B-cells, natural killer cells, neutrophils, eosinophils, epidermal Langerhans cells and platelets.

//Sequence similarities: Contains 1 C-type lectin domain.