

Anti-RanBP2 (human) antibody, rabbit serum

71-003 50 μ l 71-004 250 μ l

RanBP2 was identified as a protein that interact with small GTP-binding protein Ran and forms a large multiprotein complex involved in many biological processes such as mRNA processing, nuclear transport, cell cycle control and postmitotic nuclear reassembly. The protein is identified by western blotting as an apparent molecular mass of 360 kD (see below). It is involved in nucleation of microtubule and control of cell growth by interacting with many protein factors.

Immunogen: synthetic peptide corresponding to 3 times repeated sequence in RanBP2;
SKAPKSGFEGMFTKKE

Application :

1. Western blotting (~x 1,000 dilution)
2. Immunoprecipitation
3. Indirect immuno-staining of RanBP2 in cell

Specifications

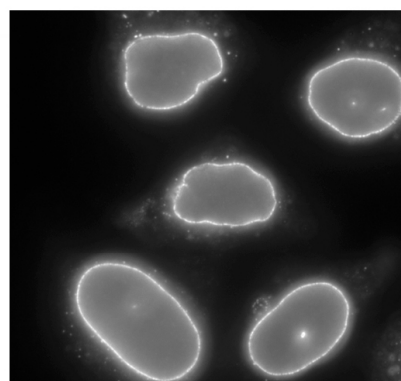
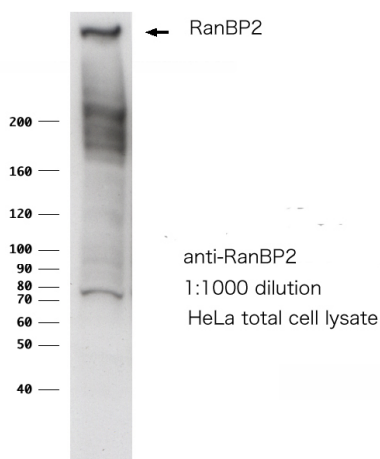
State: Undiluted antiserum added with 0.09% sodium azide

Reactivity: human RanBPM. Although not tested, it is like to react with other mammalian homologs because of high sequence homology of the antigen.

Storage : 4°C

References: This product has been used for the following reference

1. Yokoyama N et al. Nature 376;184 (1995)



Para formaldehyde fixed HeLa cells
stained with anti RanBP2 (551-2)
(1:2000 dilution)

<Distributed by >: SCETI K.K. DF Kasumigaseki Place, 3-6-7 Kasumigaseki,
Chiyoda-ku Tokyo 100-0013 JAPAN
Tel: +81-3-5510-2347 Fax: +81-3-5510-0134
E-mail: exp-pet@sceti.co.jp URL: www.sceti.co.jp/export/
<Manufactured by > : BioAcademia, Inc. 7-7-18 Saito-Asagi, Ibaraki, Osaka 567-0085, JAPAN