

anti-U1 snRNP C (U1C) antibody, rat monoclonal (4H12)

70-400

100 µg

The **spliceosomal U1C protein** is critical to the initiation and regulation of precursor messenger RNA (pre-mRNA) splicing, as part of the U1 small nuclear ribonucleoprotein particle (**snRNP**). U1C is needed for efficient complex formation of U1 snRNP with a 5' splice site.

The antibody was produced from the hybridoma cultured in serum-free medium and purified under mild conditions by propriety chromatography processes.

Applications

1. Western blotting 2. Immunocytochemistry 3. Immunohistochemistry (frozen section)
4. ELISA Other applications are not tested.

Immunogen: Recombinant GST-fused mouse U1C (full length)

Isotype: Rat IgG 2a kappa

Form: Purified monoclonal antibody (IgG) 1mg/ml in PBS, 50% glycerol, filter-sterilized

Specificity: Specific to human, simian, and mouse U1C. Other species are not tested.

Storage: -20 (long period, -70)

Data Link Swiss-Prot [Q62241](http://www.uniprot.org/entry/Q62241)

References:

1. Muto, Y. *et al.* (2004) "The structure and biochemical properties of the human spliceosomal protein U1C." *J Mol Biol* **341**: 185-198 PMID: [15312772](https://pubmed.ncbi.nlm.nih.gov/15312772/)
2. Pomeranz Krummel, D.A. *et al.* (2009) "Crystal structure of human spliceosomal U1 snRNP at 5.5Å resolution." *Nature* **458**: 475-480 PMID: [19325628](https://pubmed.ncbi.nlm.nih.gov/19325628/)

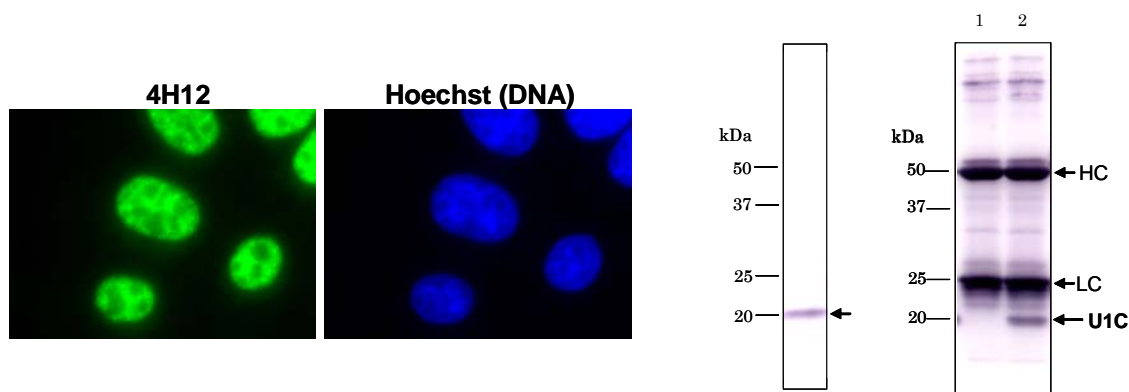


Fig.1 Immunofluorescent staining of L929 (mouse) cells with antibody 4H12.

Fig.2 Detection of U1C protein in HeLa total cell extract by Western blotting with antibody 4H12.

Fig.3 Immunoprecipitation of U1C protein with 4H12. lane1: no extract lane2: HeLa total extract HC, LC ; IgG heavy & light chain