

## Anti-Rad22 (S. pombe) antibody (rabbit serum)

Immunized Animal; Rabbit

Polyclonal antiserum

63-003 50  $\mu$ l, 63-004 250  $\mu$ l

Rad22 protein of *Schizosaccharomyces pombe* (fission yeast) is a functional and structural homolog of *S. cerevisiae* and human Rad52 proteins, which play a major role in genetic recombination and recombination repair by mediating strand annealing reaction between homologous DNA strands (1).

The product was prepared by immunizing rabbit with recombinant Rhp22 protein expressed in *E. coli* and purified.

Using this anti-serum, Rad22 protein (52 kD) in the crude extract was detected by Western blotting at the position near the 60 kD marker (Fig 1)

### Application

- 1) Western blotting (x 2,000~5,000 dilution)
- 2) Immuno-precipitation
- 3) Detection of foci formation by indirect immunofluorescence

### Specification

Form; 0.09 % sodium azide added

Storage: 4 C

### Reference

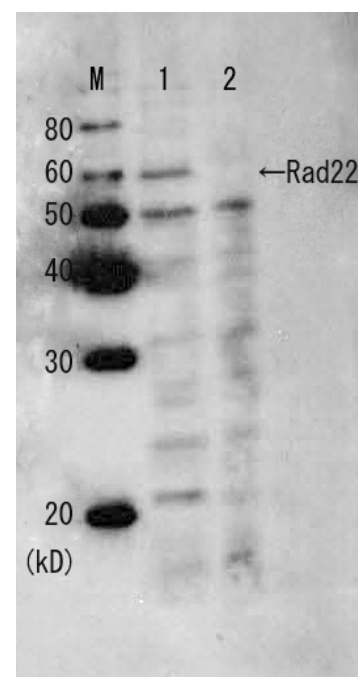
1. Lehmann AR, Mutation Res. 363, 147 (1996) Review

Fig. 1 Western blot analysis of Rad22 in whole cell extracts.

M: Molecular weight markers (kD)

Lane 1, Wild-type strain.

Lane 2, rad22 deletion strain.



<Distributed by >: SCETI K.K. DF Kasumigaseki Place, 3-6-7 Kasumigaseki,  
Chiyoda-ku Tokyo 100-0013 JAPAN  
Tel: +81-3-5510-2347 Fax: +81-3-5510-0134  
E-mail: [exp-pet@sceti.co.jp](mailto:exp-pet@sceti.co.jp) URL: [www.sceti.co.jp/export/](http://www.sceti.co.jp/export/)  
<Manufactured by> : BioAcademia, Inc. 7-7-18 Saito-Asagi, Ibaraki, Osaka 567-0085, JAPAN