



Peninsula Laboratories Inc.

A Member of the Bachem Group

305 Old County Road, San Carlos, CA 94070

Tel: (800) 922-1516 • (650) 592-5392

Fax: (650) 595-4071

www.bachem.com

Cat. No. T-4833

Rabbit anti-BAGE-1, -2, -3, -4, -5, -6, -7 (human)

Specifications:

- Preparation:** This polyclonal antibody was collected from rabbits immunized with a synthetic peptide as the immunogen.
- Amount:** Each vial contains 50 ul of whole serum in lyophilized form. Reconstitute with 50 ul of distilled water for the equivalent of undiluted antiserum.
- Storage:** This antibody is supplied as a lyophilized powder. Store at 2°C to 8°C upon receipt. For long-term storage, store lyophilized powder at -20°C. Once reconstituted, the materials should be stored frozen in aliquots at -20°C to -70°C. **Avoid repeated freeze/thaw cycles.**
- Applications:** Immunohistochemistry, Immunocytochemistry, and other applications.
- Sample Types:** The antibody can react with a variety of sample preparation including frozen tissue sections, paraffin embedded tissue sections and fixed cell cultures.

Recommended starting dilution for Immunohistochemical staining:

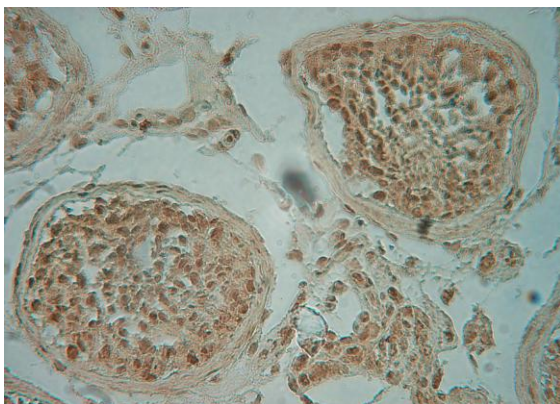
Immunofluorescence: 1:250 to 1:16000

PAP or ABC: 1:250 to 1:16000

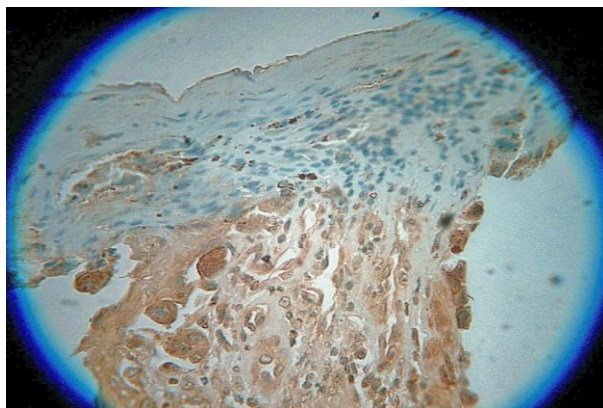
LAB-SA: 1:250 to 1:16000

It is advised for each laboratory to determine optimal dilutions for a specific application.

* Cross-reactivity information is not available



Tissues used: Normal human adult testis
Dilution: 1:1000
Incubation time: 3 hours at 37°
Pre-treatment: 0.01M Citrate buffer pH 6.0
Secondary antibody: poly-HRP



Tissues used: Human skin melanoma
Dilution: 1:1000
Incubation time: 3 hours at 37°
Pre-treatment: 0.01M Citrate buffer pH 6.0
Secondary antibody: poly-HRP