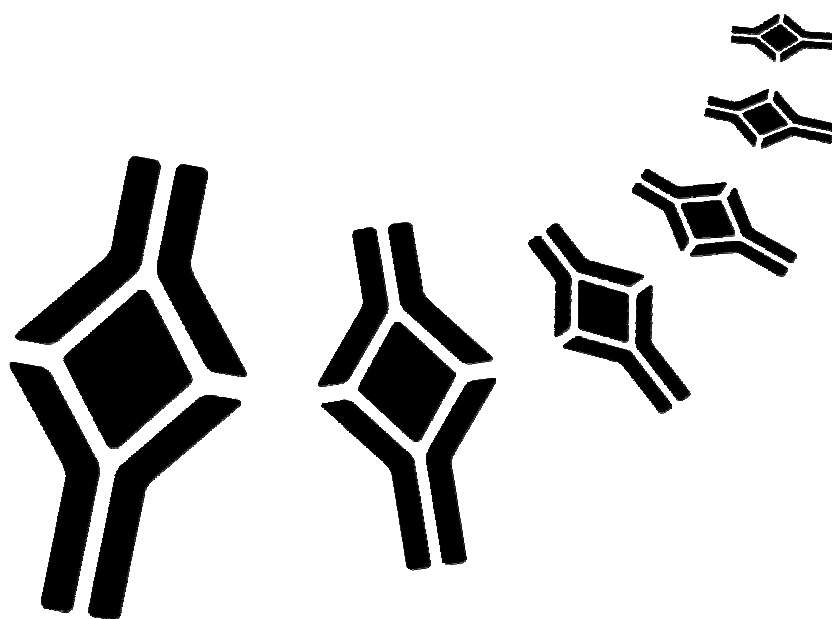


**BioVendor**

Research  
and Diagnostic Products



## **MOUSE INTERLEUKIN-22 ELISA**

Product Data Sheet

Cat. No.: RBMS6016R

For Research Use Only

## CONTENTS

---

1	INTENDED USE	3
2	SUMMARY	3
3	PRINCIPLES OF THE TEST	4
4	REAGENTS PROVIDED	5
5	STORAGE INSTRUCTIONS – ELISA KIT	5
6	SPECIMEN COLLECTION AND STORAGE INSTRUCTIONS	6
7	MATERIALS REQUIRED BUT NOT PROVIDED	6
8	PRECAUTIONS FOR USE	7
9	PREPARATION OF REAGENTS	8
10	TEST PROTOCOL	11
11	CALCULATION OF RESULTS	13
12	LIMITATIONS	15
13	PERFORMANCE CHARACTERISTICS	16
14	REFERENCES	19
15	REAGENT PREPARATION SUMMARY	21
16	TEST PROTOCOL SUMMARY	22

**»» This kit is manufactured by:  
BioVendor – Laboratorní medicína, a.s.**

**»» Use only the current version of Product Data Sheet enclosed with the kit!**

## 1 INTENDED USE

---

The mouse IL-22 ELISA is an enzyme-linked immunosorbent assay for the quantitative detection of mouse IL-22. **The mouse IL-22 ELISA is for research use only. Not for diagnostic or therapeutic procedures.**

## 2 SUMMARY

---

IL-22/TIF(IL-10-related T cell-derived inducible factor) is a new cytokine originally identified as a gene induced by IL-9 in murine T lymphocytes, and showing 22% amino acid identity with IL-10. In the mouse, the IL-22 gene is located on chromosome 10, in the same region as the IFN gamma gene. Although it is a single copy gene in BALB/c and DBA/2 mice, the IL-22 gene is duplicated in other strains such as C57Bl/6, FVB and 129. The two copies, which show 98% nucleotide identity in the coding region, were named IL-TIF alpha and IL-TIF beta with the IL-TIF beta gene being either differentially regulated, or not expressed at all. IL-22 is produced by activated Th1 and NK cells acting primarily on epithelial cells and is involved in inflammatory responses. Neither resting nor activated immune cells express IL-22 receptor, and IL-22 does not have any effects on these cells in vitro and in vivo. In contrast, cells of the skin and the digestive and respiratory systems represent putative targets of this cytokine. Thus IL-22 does not serve the communication between immune cells but is a T cell mediator that directly promotes the innate, nonspecific immunity of tissues. IL-22 serves as a protective molecule to counteract the destructive nature of the immune response to limit tissue damage. Interleukin-22 (IL-22) is a cytokine that regulates the production of acute phase proteins of the immunological response. On binding to its cognate receptor (IL-22R1), which is associated to the interleukin-10 receptor 2 (IL-10R2), IL-22 promotes activation of signal transducer and activator of transcription (STAT) pathway and several other cellular responses.

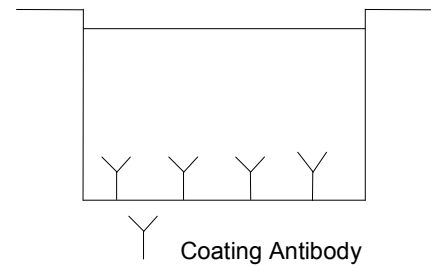
A soluble receptor termed interleukin-22 binding protein (IL-22BP) is also able to bind to IL-22 as a natural protein antagonist, and probably provides systemic regulation of IL-22 activity. IL-22, in contrast to its relative IFN-gamma, regulates the expression of only a few genes in keratinocytes. This is due to varied signal transduction. The IL-22 effects are transcriptional and either independent of protein synthesis and secretion, or mediated by a secreted protein. Inflammatory conditions, but not keratinocyte differentiation, amplify the IL-22 effects. IL-22 application in mice enhances cutaneous S100A9 and MMP1 expression. Psoriatic patients show strongly elevated IL-22 plasma levels, which correlated with the disease severity. IL-22 plays a protective role in T cell-mediated hepatitis induced by Concanavalin A (Con A), acting as a survival factor for hepatocytes. IL-22 is present in high quantities in the blood of Crohn's disease patients in contrast to IFN-gamma and IL-17.

### 3 PRINCIPLES OF THE TEST

An anti-mouse IL-22 coating antibody is adsorbed onto microwells.

Figure 1

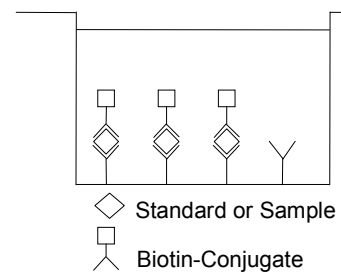
#### Coated Microwell



Mouse IL-22 present in the sample or standard binds to antibodies adsorbed to the microwells. A biotin-conjugated anti-mouse IL-22 antibody is added and binds to mouse IL-22 captured by the first antibody.

Figure 2

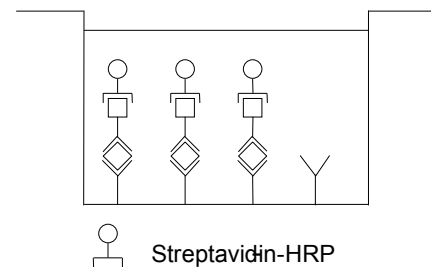
#### First Incubation



Following incubation unbound biotin-conjugated anti-mouse IL-22 antibody is removed during a wash step. Streptavidin-HRP is added and binds to the biotin-conjugated anti-mouse IL-22 antibody.

Figure 3

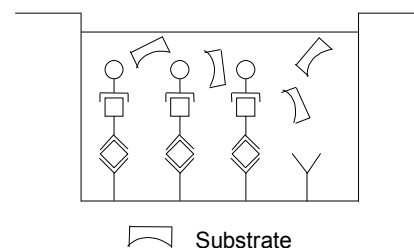
#### Second Incubation



Following incubation unbound Streptavidin-HRP is removed during a wash step, and substrate solution reactive with HRP is added to the wells.

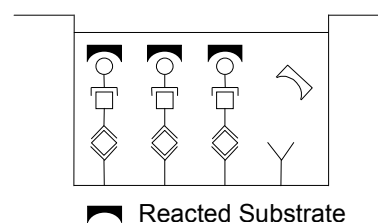
Figure 4

#### Third Incubation



A coloured product is formed in proportion to the amount of mouse IL-22 present in the sample or standard. The reaction is terminated by addition of acid and absorbance is measured at 450 nm. A standard curve is prepared from 7 mouse IL-22 standard dilutions and mouse IL-22 sample concentration determined.

Figure 5



## 4 REAGENTS PROVIDED

- 1 aluminium pouch with a **Antibody Coated Microtiter Strips** with polyclonal antibody to mouse IL-22
- 1 vial (100 µl) **Biotin-Conjugate** anti-mouse IL-22 polyclonal antibody
- 1 vial (150 µl) **Streptavidin-HRP**
- 2 vials mouse IL-22 **Standard** lyophilized, 1000 pg/ml upon reconstitution
- 1 vial (12 ml) **Sample Diluent**
- 1 vial (5 ml) **Assay Buffer Concentrate** 20x(PBS with 1% Tween 20 and 10% BSA)
- 1 bottle (50 ml) **Wash Buffer Concentrate** 20x(PBS with 1% Tween 20)
- 1 vial (15 ml) **Substrate Solution** (tetramethyl-benzidine)
- 1 vial (12 ml) **Stop Solution** (1M Phosphoric acid)
- 1 vial (0.4 ml) **Blue-Dye**
- 1 vial (0.4 ml) **Green-Dye**
- 1 vial (0.4 ml) **Red-Dye**
- 4 **Adhesive Films**

## 5 STORAGE INSTRUCTIONS – ELISA KIT

Store kit reagents between 2° and 8°C. Immediately after use remaining reagents should be returned to cold storage (2° to 8°C). Expiry of the kit and reagents is stated on labels. Expiry of the kit components can only be guaranteed if the components are stored properly, and if, in case of repeated use of one component, this reagent is not contaminated by the first handling.

## 6 SPECIMEN COLLECTION AND STORAGE INSTRUCTIONS

---

Cell culture supernatant, serum and plasma (citrate) were tested with this assay. Other biological samples might be suitable for use in the assay. Remove serum or plasma from the clot or cells as soon as possible after clotting and separation.

Pay attention to a possible “**Hook Effect**” due to high sample concentrations (see chapter 11). Samples containing a visible precipitate must be clarified prior to use in the assay. Do not use grossly hemolyzed or lipemic specimens.

Samples should be aliquoted and must be stored frozen at -20°C to avoid loss of bioactive mouse IL-22. If samples are to be run within 24 hours, they may be stored at 2° to 8°C (for sample stability refer to 13.4).

Avoid repeated freeze-thaw cycles. Prior to assay, the frozen sample should be brought to room temperature slowly and mixed gently.

## 7 MATERIALS REQUIRED BUT NOT PROVIDED

---

- 5 ml and 10 ml graduated pipettes
- 5 µl to 1000 µl adjustable single channel micropipettes with disposable tips
- 50 µl to 300 µl adjustable multichannel micropipette with disposable tips
- Multichannel micropipette reservoir
- Beakers, flasks, cylinders necessary for preparation of reagents
- Device for delivery of wash solution (multichannel wash bottle or automatic wash system)
- Microwell strip reader capable of reading at 450 nm (620 nm as optional reference wave length)
- Glass-distilled or deionized water
- Statistical calculator with program to perform regression analysis

## 8 PRECAUTIONS FOR USE

---

- All chemicals should be considered as potentially hazardous. We therefore recommend that this product is handled only by those persons who have been trained in laboratory techniques and that it is used in accordance with the principles of good laboratory practice. Wear suitable protective clothing such as laboratory overalls, safety glasses and gloves. Care should be taken to avoid contact with skin or eyes. In the case of contact with skin or eyes wash immediately with water. See material safety data sheet(s) and/or safety statement(s) for specific advice.
- Reagents are intended for research use only and are not for use in diagnostic or therapeutic procedures.
- Do not mix or substitute reagents with those from other lots or other sources.
- Do not use kit reagents beyond expiration date on label.
- Do not expose kit reagents to strong light during storage or incubation.
- Do not pipette by mouth.
- Do not eat or smoke in areas where kit reagents or samples are handled.
- Avoid contact of skin or mucous membranes with kit reagents or specimens.
- Rubber or disposable latex gloves should be worn while handling kit reagents or specimens.
- Avoid contact of substrate solution with oxidizing agents and metal.
- Avoid splashing or generation of aerosols.
- In order to avoid microbial contamination or cross-contamination of reagents or specimens which may invalidate the test use disposable pipette tips and/or pipettes.
- Use clean, dedicated reagent trays for dispensing the conjugate and substrate reagent.
- Exposure to acid inactivates the conjugate.
- Glass-distilled water or deionized water must be used for reagent preparation.
- Substrate solution must be at room temperature prior to use.
- Decontaminate and dispose specimens and all potentially contaminated materials as they could contain infectious agents. The preferred method of decontamination is autoclaving for a minimum of 1 hour at 121.5°C.
- Liquid wastes not containing acid and neutralized waste may be mixed with sodium hypochlorite in volumes such that the final mixture contains 1.0% sodium hypochlorite. Allow 30 minutes for effective decontamination. Liquid waste containing acid must be neutralized prior to the addition of sodium hypochlorite.

## 9 PREPARATION OF REAGENTS

**Buffer concentrates** should be brought to room temperature and should be diluted before starting the test procedure.

### 9.1 Wash Buffer

If crystals have formed in the **Wash Buffer Concentrate**, warm it gently until they have completely dissolved.

Pour entire contents (50 ml) of the Wash Buffer Concentrate into a clean 1000 ml graduated cylinder. Bring to final volume of 1000 ml with glass-distilled or deionized water. Mix gently to avoid foaming. The pH of the final solution should adjust to 7.4.

Transfer to a clean wash bottle and store at 2° to 25°C. Please note that Wash Buffer is stable for 30 days.

Wash Buffer may also be prepared as needed according to the following table:

Number of Strips	Wash Buffer Concentrate (ml)	Distilled Water (ml)
1 - 6	25	475
1 - 12	50	950

### 9.2 Assay Buffer (1x)

Pour the entire contents (5 ml) of the **Assay Buffer Concentrate** (20x) into a clean 100 ml graduated cylinder. Bring to final volume of 100 ml with distilled water. Mix gently to avoid foaming.

Store at 2° to 8°C. Please note that the Assay Buffer (1x) is stable for 30 days.

Assay Buffer (1x) may also be prepared as needed according to the following table:

Number of Strips	Assay Buffer Concentrate (ml)	Distilled Water (ml)
1 - 6	2.5	47.5
1 - 12	5.0	95.0

### 9.3 Biotin-Conjugate

**Please note that the Biotin-Conjugate should be used within 30 minutes after dilution.**

Make a 1:100 dilution of the concentrated **Biotin-Conjugate** solution with Assay Buffer (1x) in a clean plastic tube as needed according to the following table:

Number of Strips	Biotin-Conjugate (ml)	Assay Buffer (1x) (ml)
1 - 6	0.03	2.97
1 - 12	0.06	5.94



## 9.4 Streptavidin-HRP

**Please note that the Streptavidin-HRP should be used within 30 minutes after dilution.**

Make a 1:200 dilution of the concentrated **Streptavidin-HRP** solution with Assay Buffer (1x) in a clean plastic tube as needed according to the following table:

Number of Strips	Streptavidin-HRP (ml)	Assay Buffer (1x) (ml)
1 - 6	0.03	5.97
1 - 12	0.06	11.94

## 9.5 Mouse IL-22 Standard

Reconstitute **mouse IL-22 standard** by addition of distilled water.

Refer to the Certificate of Analysis for current volume of Distilled water needed for reconstitution of standard. Swirl or mix gently to insure complete and homogeneous solubilisation (concentration of reconstituted standard = 1000 pg/ml).

The standard has to be used immediately after reconstitution and cannot be stored.

**Standard dilutions** can be prepared directly on the microwell plate (see 10.c) or alternatively in tubes (see 9.5.1).

### 9.5.1 External Standard Dilution

Label 7 tubes, one for each standard point.

S1, S2, S3, S4, S5, S6, S7

Then prepare 1:2 serial dilutions for the standard curve as follows:

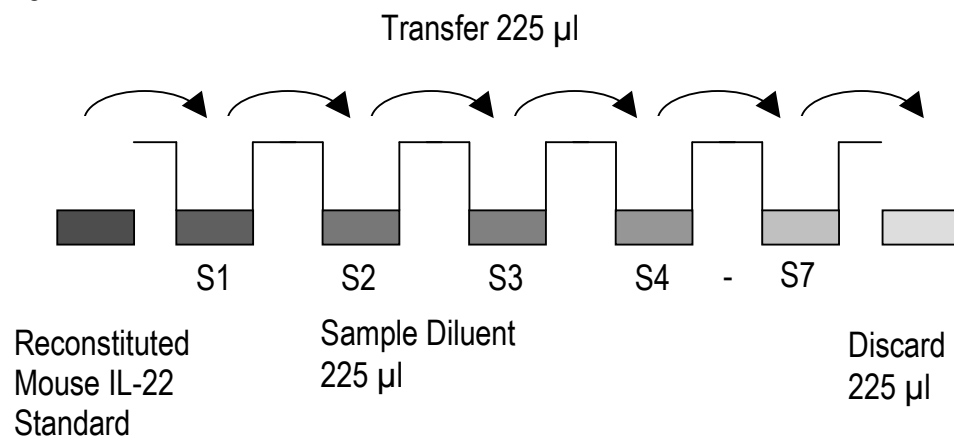
Pipette 225 µl of Sample Diluent into each tube.

Pipette 225 µl of reconstituted standard (concentration = 1000 pg/ml) into the first tube, labelled S1, and mix (concentration of standard 1 = 500 pg/ml).

Pipette 225 µl of this dilution into the second tube, labelled S2, and mix thoroughly before the next transfer. Repeat serial dilutions 5 more times thus creating the points of the standard curve (see Figure 6).

Sample Diluent serves as blank.

Figure 6



### 9.6 Addition of Colour-giving Reagents: **Blue-Dye**, **Green-Dye**, **Red-Dye**

**This procedure is optional**, does not in any way interfere with the test results, and is designed to help the customer with the performance of the test, but can also be omitted, just following the instruction booklet.

Alternatively, the dye solutions from the stocks provided (**Blue-Dye**, **Green-Dye**, **Red-Dye**) can be added to the reagents according to the following guidelines:

**1. Diluent:** Before standard and sample dilution add the **Blue-Dye** at a dilution of 1:250 (see table below) to the appropriate diluent (1x) according to the test protocol. After addition of **Blue-Dye**, proceed according to the instruction booklet.

5 ml Sample Diluent	20 µl <b>Blue-Dye</b>
12 ml Sample Diluent	48 µl <b>Blue-Dye</b>

**2. Biotin-Conjugate:** Before dilution of the concentrated Biotin-Conjugate, add the **Green-Dye** at a dilution of 1:100 (see table below) to the Assay Buffer (1x) used for the final conjugate dilution. Proceed after addition of **Green-Dye** according to the instruction booklet: Preparation of Biotin-Conjugate.

3 ml Assay Buffer (1x)	30 µl <b>Green-Dye</b>
6 ml Assay Buffer (1x)	60 µl <b>Green-Dye</b>

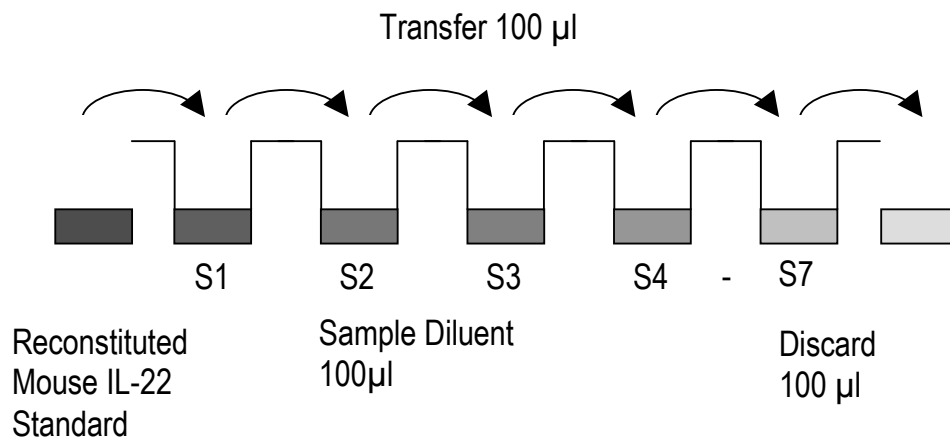
**3. Streptavidin-HRP:** Before dilution of the concentrated Streptavidin-HRP, add the **Red-Dye** at a dilution of 1:250 (see table below) to the Assay Buffer (1x) used for the final Streptavidin-HRP dilution. Proceed after addition of **Red-Dye** according to the instruction booklet: Preparation of Streptavidin-HRP.

6 ml Assay Buffer (1x)	24 µl <b>Red-Dye</b>
12 ml Assay Buffer (1x)	48 µl <b>Red-Dye</b>

## 10 TEST PROTOCOL

- Determine the number of microwell strips required to test the desired number of samples plus appropriate number of wells needed for running blanks and standards. Each sample, standard, blank and optional control sample should be assayed in duplicate. Remove extra microwell strips from holder and store in foil bag with the desiccant provided at 2°-8°C sealed tightly.
- Wash the microwell strips twice with approximately 400 µl **Wash Buffer** per well with thorough aspiration of microwell contents between washes. Allow the Wash Buffer to sit in the wells for about **10 – 15 seconds** before aspiration. Take care not to scratch the surface of the microwells. After the last wash step, empty wells and tap microwell strips on absorbent pad or paper towel to remove excess Wash Buffer. Use the microwell strips immediately after washing. Alternatively microwell strips can be placed upside down on a wet absorbent paper for not longer than 15 minutes. **Do not allow wells to dry.**
- Standard dilution on the microwell plate** (Alternatively the standard dilution can be prepared in tubes - see 9.5.1.): Add 100 µl of Sample Diluent in duplicate to all **standard wells**. Pipette 100 µl of prepared **standard** (see Preparation of Standard 0, concentration = 1000 pg/ml) in duplicate into well A1 and A2 (see Table 1). Mix the contents of wells A1 and A2 by repeated aspiration and ejection (concentration of standard 1, S1 = 500 pg/ml), and transfer 100 µl to wells B1 and B2, respectively (see
- Figure 7). Take care not to scratch the inner surface of the microwells. Continue this procedure 5 times, creating two rows of mouse IL-22 standard dilutions ranging from 500.0 to 7.8 pg/ml. Discard 100 µl of the contents from the last microwells (G1, G2) used.

Figure 7



In case of an **external standard dilution** (see 9.5.1), pipette 100 µl of these standard dilutions (S1 - S7) in the standard wells according to Table 1.

Table 1

Table depicting an example of the arrangement of blanks, standards and samples in the microwell strips:

	1	2	3	4
<b>A</b>	Standard 1 (500.0 pg/ml)	Standard 1 (500.0 pg/ml)	Sample 1	Sample 1
<b>B</b>	Standard 2 (250.0 pg/ml)	Standard 2 (250.0 pg/ml)	Sample 2	Sample 2
<b>C</b>	Standard 3 (125.0 pg/ml)	Standard 3 (125.0 pg/ml)	Sample 3	Sample 3
<b>D</b>	Standard 4 (62.5 pg/ml)	Standard 4 (62.5 pg/ml)	Sample 4	Sample 4
<b>E</b>	Standard 5 (31.3 pg/ml)	Standard 5 (31.3 pg/ml)	Sample 5	Sample 5
<b>F</b>	Standard 6 (15.6 pg/ml)	Standard 6 (15.6 pg/ml)	Sample 6	Sample 6
<b>G</b>	Standard 7 (7.8 pg/ml)	Standard 7 (7.8 pg/ml)	Sample 7	Sample 7
<b>H</b>	Blank	Blank	Sample 8	Sample 8

- e. Add 100 µl of **Sample Diluent** in duplicate to the **blank wells**.
- f. Add 50 µl of **Sample Diluent** to the **sample wells**.
- g. Add 50 µl of each **sample** in duplicate to the **sample wells**.
- h. Prepare **Biotin-Conjugate** (see Preparation of Biotin-Conjugate 9.3).
- i. Add 50 µl of **Biotin-Conjugate** to all wells.
- j. Cover with an adhesive film and incubate at room temperature (18° to 25°C) for 2 hours, if available on a microplate shaker set at 100 rpm.
- k. Prepare **Streptavidin-HRP** (refer to Preparation of Streptavidin-HRP 9.4).
- l. Remove adhesive film and empty wells. **Wash** microwell strips 3 times according to point b. of the test protocol. Proceed immediately to the next step.
- m. Add 100 µl of diluted **Streptavidin-HRP** to all wells, including the blank wells.
- n. Cover with an adhesive film and incubate at room temperature (18° to 25°C) for 1 hour, if available on a microplate shaker set at 100 rpm.
- o. Remove adhesive film and empty wells. **Wash** microwell strips 3 times according to point b. of the test protocol. Proceed immediately to the next step.
- p. Pipette 100 µl of **TMB Substrate Solution** to all wells.
- q. Incubate the microwell strips at room temperature (18° to 25°C) for about 10 min. Avoid direct exposure to intense light. **The colour development on the plate should be monitored and the substrate reaction stopped (see next point of this protocol) before positive wells are no longer properly recordable. Determination of the ideal time period for colour development has to be done individually for each assay.** It is recommended to add the stop solution when the highest standard has developed a dark blue colour. Alternatively the colour development can be monitored by the ELISA reader at 620 nm. The substrate reaction should be stopped as soon as Standard 1 has reached an OD of 0.6 – 0.65.

- r. Stop the enzyme reaction by quickly pipetting 100 µl of **Stop Solution** into each well. It is important that the Stop Solution is spread quickly and uniformly throughout the microwells to completely inactivate the enzyme. Results must be read immediately after the Stop Solution is added or within one hour if the microwell strips are stored at 2 - 8°C in the dark.
- s. Read absorbance of each microwell on a spectro-photometer using 450 nm as the primary wave length (optionally 620 nm as the reference wave length; 610 nm to 650 nm is acceptable). Blank the plate reader according to the manufacturer's instructions by using the blank wells. Determine the absorbance of both the samples and the standards.

**Note: In case of incubation without shaking the obtained O.D. values may be lower than indicated below. Nevertheless the results are still valid.**

## 11 CALCULATION OF RESULTS

---

- Calculate the average absorbance values for each set of duplicate standards and samples. Duplicates should be within 20 per cent of the mean value.
- Create a standard curve by plotting the mean absorbance for each standard concentration on the ordinate against the mouse IL-22 concentration on the abscissa. Draw a best fit curve through the points of the graph (a 5-parameter curve fit is recommended).
- To determine the concentration of circulating mouse IL-22 for each sample, first find the mean absorbance value on the ordinate and extend a horizontal line to the standard curve. At the point of intersection, extend a vertical line to the abscissa and read the corresponding mouse IL-22 concentration.
- **If instructions in this protocol have been followed samples have been diluted 1:2 (50 µl sample + 50 µl Sample Diluent), the concentration read from the standard curve must be multiplied by the dilution factor (x 2).**
- **Calculation of samples with a concentration exceeding standard 1 may result in incorrect, low mouse IL-22 levels (Hook Effect). Such samples require further external predilution according to expected mouse IL-22 values with Sample Diluent in order to precisely quantitate the actual mouse IL-22 level.**
- It is suggested that each testing facility establishes a control sample of known mouse IL-22 concentration and runs this additional control with each assay. If the values obtained are not within the expected range of the control, the assay results may be invalid.
- A representative standard curve is shown in Figure 8. This curve cannot be used to derive test results. Each laboratory must prepare a standard curve for each group of microwell strips assayed.

Figure 8

Representative standard curve for mouse IL-22 ELISA. Mouse IL-22 was diluted in serial 2-fold steps in Sample Diluent. Do not use this standard curve to derive test results. A standard curve must be run for each group of microwell strips assayed.

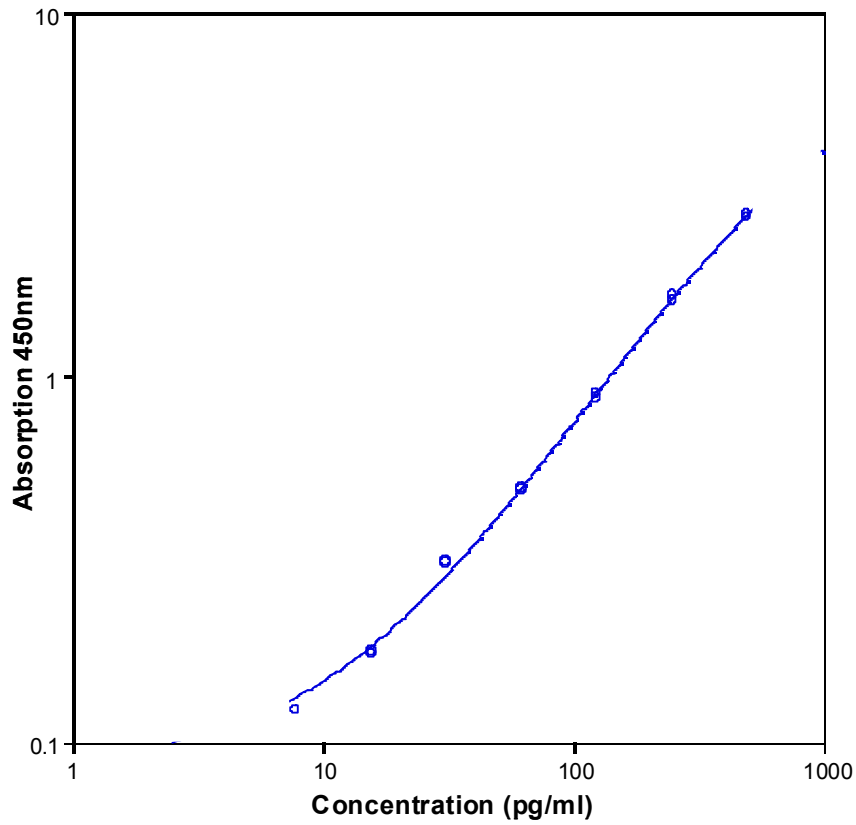


Table 2  
Typical data using the mouse IL-22 ELISA  
Measuring wavelength: 450 nm  
Reference wavelength: 620 nm

Standard	Mouse IL-22 Concentration pg/ml)	O.D. at 450 nm	Mean O.D. at 450 nm	C.V. (%)
1	500.0	2.817	2.777	1.4
	500.0	2.737		
2	250.0	1.680	1.650	1.8
	250.0	1.619		
3	125.0	0.903	0.890	1.5
	125.0	0.877		
4	62.5	0.494	0.495	0.2
	62.5	0.496		
5	31.3	0.311	0.313	0.4
	31.3	0.314		
6	15.6	0.175	0.178	1.2
	15.6	0.179		
7	7.8	0.123	0.123	0.0
	7.8	0.123		
Blank	0.0	0.048	0.047	1.8
	0.0	0.047		

The OD values of the standard curve may vary according to the conditions of assay performance (e.g. operator, pipetting technique, washing technique or temperature effects). Furthermore shelf life of the kit may affect enzymatic activity and thus colour intensity. Values measured are still valid.

## 12 LIMITATIONS

- Since exact conditions may vary from assay to assay, a standard curve must be established for every run.
- Bacterial or fungal contamination of either screen samples or reagents or cross-contamination between reagents may cause erroneous results.
- Disposable pipette tips, flasks or glassware are preferred, reusable glassware must be washed and thoroughly rinsed of all detergents before use.
- Improper or insufficient washing at any stage of the procedure will result in either false positive or false negative results. Empty wells completely before dispensing fresh wash solution, fill with Wash Buffer as indicated for each wash cycle and do not allow wells to sit uncovered or dry for extended periods.

## 13 PERFORMANCE CHARACTERISTICS

### 13.1 Sensitivity

The limit of detection of mouse IL-22 defined as the analyte concentration resulting in an absorbance significantly higher than that of the dilution medium (mean plus 2 standard deviations) was determined to be 1.6 pg/ml (mean of 6 independent assays).

### 13.2 Reproducibility

#### 13.2.1 Intra-assay

Reproducibility within the assay was evaluated in 3 independent experiments. Each assay was carried out with 6 replicates of 8 serum and plasma samples containing different concentrations of mouse IL-22. 2 standard curves were run on each plate. Data below show the mean mouse IL-22 concentration and the coefficient of variation for each sample (see Table 3). The calculated overall intra-assay coefficient of variation was 4.2%.

Table 3

The mean mouse IL-22 concentration and the coefficient of variation for each sample

Sample	Experiment	Mean Mouse IL-22 Concentration (pg/ml)	Coefficient of Variation (%)
1	1	916.8	3.2
	2	867.7	5.1
	3	919.1	2.0
2	1	41.8	1.6
	2	38.6	7.0
	3	39.0	5.5
3	1	1030.0	2.5
	2	998.2	1.9
	3	985.4	1.7
4	1	51.2	3.3
	2	50.7	4.6
	3	46.7	3.5
5	1	909.0	3.8
	2	842.2	3.8
	3	812.7	4.4
6	1	38.2	6.5
	2	36.3	5.8
	3	46.0	11.3
7	1	611.6	3.6
	2	576.2	4.9
	3	517.3	3.8
8	1	88.8	3.9
	2	89.9	3.0
	3	79.4	4.6



### 13.2.2 Inter-assay

Assay to assay reproducibility within one laboratory was evaluated in 3 independent experiments. Each assay was carried out with 6 replicates of 8 serum and plasma samples containing different concentrations of mouse IL-22. 2 standard curves were run on each plate. Data below show the mean mouse IL-22 concentration and the coefficient of variation calculated on 18 determinations of each sample (see Table 4). The calculated overall inter-assay coefficient of variation was 6.1%.

Table 4

The mean mouse IL-22 concentration and the coefficient of variation of each sample

Sample	Mean Mouse IL-22 Concentration (pg/ml)	Coefficient of Variation (%)
1	901.2	3.2
2	39.8	4.4
3	1004.5	2.3
4	49.5	5.0
5	854.6	5.8
6	40.2	12.8
7	568.4	8.4
8	86.1	6.7

### 13.3 Dilution Linearity

Serum plasma cell culture supernatant samples with different levels of Product were analysed at serial 2 fold dilutions with 4 replicates each.

The recovery ranged from 110.3% to 127.7% with an overall recovery of 116.9% (see Table 5).

Table 5

Sample	Dilution	Expected IL-22 Concentration (pg/ml)	Mouse Observed Mouse IL-22 Concentration (pg/ml)	Recovery of Expected Mouse IL-22 Concentration (%)
1	1		573.2	
	2	286.6	345.7	120.6
	4	172.9	208.8	120.8
	8	104.4	118.2	113.3
2	1		464.4	
	2	232.2	296.4	127.7
	4	148.2	176.7	119.2
	8	88.4	105.1	118.9
3	1		152.8	
	2	76.4	90.3	118.2
	4	45.1	52.9	117.3
	8	26.5	29.4	111.2
4	1		49.5	
	2	24.75	27.3	110.3
	4	13.64	15.4	113.0
	8	7.71	8.7	112.4

### 13.4 Sample Stability

#### 13.4.1 Freeze-Thaw Stability

Aliquots of serum and plasma samples (spiked or unspiked) were stored at -20°C and thawed 5 times, and the mouse IL-22 levels determined. There was no significant loss of mouse IL-22 immunoreactivity detected by freezing and thawing.

#### 13.4.2 Storage Stability

Aliquots of serum and plasma samples (spiked or unspiked) were stored at -20°C, 2-8°C, room temperature (RT) and at 37°C, and the mouse IL-22 level determined after 24 h. There was no significant loss of mouse IL-22 immunoreactivity detected during storage under above conditions.

### 13.5 Specificity

The interference of circulating factors of the immune system was evaluated by spiking these proteins at physiologically relevant concentrations into serum. There was no crossreactivity detected.

### 13.6 Expected Values

A panel of samples from randomly selected mice was tested for mouse IL-22. The detected mouse IL-22 sera levels ranged between 20.7 and 59.6 pg/ml with a mean level of 44.7 pg/ml. The detected mouse IL-22 plasma levels ranged between 21.5 and 47.9 pg/ml with a mean level of 34.7 pg/ml.

## 14 REFERENCES

---

- 1) Zenewicz LA, Yancopoulos GD, Valenzuela DM, Murphy AJ, Karow M, Flavell RA. Interleukin-22 but not interleukin-17 provides protection to hepatocytes during acute liver inflammation. *Immunity*. 2007 Oct;27(4):647-59. Epub 2007 Oct 4.
- 2) Levillayer F, Mas M, Levi-Acobas F, Brahic M, Bureau JF. Interleukin 22 is a candidate gene for Tmevp3, a locus controlling Theiler's virus-induced neurological diseases. *Genetics*. 2007 Jul;176(3):1835-44. Epub 2007 May 4.
- 3) Wolk K, Witte E, Hoffmann U, Doecke WD, Endesfelder S, Asadullah K, Sterry W, Volk HD, Wittig BM, Sabat R. IL-22 induces lipopolysaccharide-binding protein in hepatocytes: a potential systemic role of IL-22 in Crohn's disease. *J Immunol*. 2007 May 1;178(9):5973-81.
- 4) Zheng Y, Danilenko DM, Valdez P, Kasman I, Eastham-Anderson J, Wu J, Ouyang W. Interleukin-22, a T(H)17 cytokine, mediates IL-23-induced dermal inflammation and acanthosis. *Nature*. 2007 Feb 8;445(7128):648-51. Epub 2006 Dec 24.
- 5) Nagem RA, Ferreira Júnior JR, Dumoutier L, Renauld JC, Polikarpov I. Interleukin-22 and its crystal structure. *Vitam Horm*. 2006;74:77-103. Review.
- 6) Liang SC, Tan XY, Luxenberg DP, Karim R, Dunussi-Joannopoulos K, Collins M, Fouser LA. Interleukin (IL)-22 and IL-17 are coexpressed by Th17 cells and cooperatively enhance expression of antimicrobial peptides. *J Exp Med*. 2006 Oct 2;203(10):2271-9. Epub 2006 Sep 18.
- 7) Wolk K, Witte E, Wallace E, Döcke WD, Kunz S, Asadullah K, Volk HD, Sterry W, Sabat R. IL-22 regulates the expression of genes responsible for antimicrobial defense, cellular differentiation, and mobility in keratinocytes: a potential role in psoriasis. *Eur J Immunol*. 2006 May;36(5):1309-23.
- 8) Pan H, Hong F, Radaeva S, Gao B. Hydrodynamic gene delivery of interleukin-22 protects the mouse liver from concanavalin A-, carbon tetrachloride-, and Fas ligand-induced injury via activation of STAT3. *Cell Mol Immunol*. 2004 Feb;1(1):43-9.
- 9) Nagakawa H, Shimozato O, Yu L, Takiguchi Y, Tatsumi K, Kuriyama T, Tagawa M. Expression of interleukin-22 in murine carcinoma cells did not influence tumour growth in vivo but did improve survival of the inoculated hosts. *Scand J Immunol*. 2004 Nov;60(5):449-54.

- 10) Wolk K, Witte E, Reineke U, Witte K, Friedrich M, Sterry W, Asadullah K, Volk HD, Sabat R. Is there an interaction between interleukin-10 and interleukin-22? *Genes Immun*. 2005 Feb;6(1):8-18.
- 11) Wolk K, Kunz S, Witte E, Friedrich M, Asadullah K, Sabat R. IL-22 increases the innate immunity of tissues. *Immunity*. 2004 Aug;21(2):241-54.
- 12) Radaeva S, Sun R, Pan HN, Hong F, Gao B. Interleukin 22 (IL-22) plays a protective role in T cell-mediated murine hepatitis: IL-22 is a survival factor for hepatocytes via STAT3 activation. *Hepatology*. 2004 May;39(5):1332-42.
- 13) Nagalakshmi ML, Rascle A, Zurawski S, Menon S, de Waal Malefyt R. Interleukin-22 activates STAT3 and induces IL-10 by colon epithelial cells. *Int Immunopharmacol*. 2004 May;4(5):679-91.
- 14) Wei CC, Ho TW, Liang WG, Chen GY, Chang MS. Cloning and characterization of mouse IL-22 binding protein. *Genes Immun*. 2003 Apr;4(3):204-11.
- 15) Dumoutier L, Lejeune D, Colau D, Renauld JC. Cloning and characterization of IL-22 binding protein, a natural antagonist of IL-10-related T cell-derived inducible factor/IL-22. *J Immunol*. 2001 Jun 15;166(12):7090-5.
- 16) Dumoutier L, Van Roost E, Ameye G, Michaux L, Renauld JC. IL-TIF/IL-22: genomic organization and mapping of the human and mouse genes. *Genes Immun*. 2000 Dec;1(8):488-94.

## 15 REAGENT PREPARATION SUMMARY

### 15.1 Wash Buffer

Add **Wash Buffer Concentrate** 20x (50 ml) to 950 ml distilled water.

Number of Strips	Wash Buffer Concentrate (ml)	Distilled Water (ml)
1 - 6	25	475
1 - 12	50	950

### 15.2 Assay Buffer (1x)

Add **Assay Buffer Concentrate** 20x (5 ml) to 95 ml distilled water.

Number of Strips	Assay Buffer Concentrate (ml)	Distilled Water (ml)
1 - 6	2.5	47.5
1 - 12	5.0	95.0

### 15.3 Biotin-Conjugate

Make a 1:100 dilution of **Biotin-Conjugate** in Assay Buffer (1x):

Number of Strips	Biotin-Conjugate (ml)	Assay Buffer (1x) (ml)
1 - 6	0.03	2.97
1 - 12	0.06	5.94

### 15.4 Streptavidin-HRP

Make a 1:200 dilution of **Streptavidin-HRP** in Assay Buffer (1x):

Number of Strips	Streptavidin-HRP (ml)	Assay Buffer (1x) (ml)
1 - 6	0.03	5.97
1 - 12	0.06	11.94

### 15.5 Mouse IL-22 Standard

Reconstitute lyophilized **mouse IL-22 standard** with distilled water. (Reconstitution volume is stated on the label of the standard vial.)

## 16 TEST PROTOCOL SUMMARY

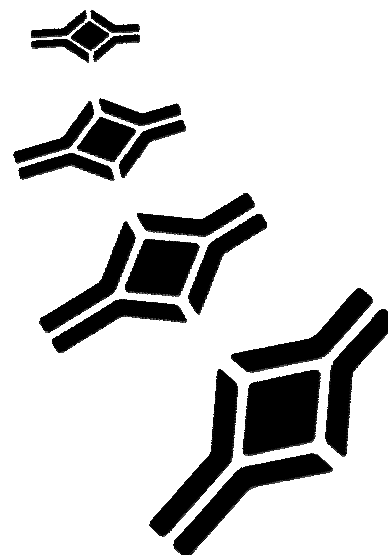
---

1. Determine the number of microwell strips required.
2. Wash microwell strips twice with Wash Buffer.
3. Standard dilution on the microwell plate: Add 100 µl Sample Diluent, in duplicate, to all standard wells. Pipette 100 µl prepared standard into the first wells and create standard dilutions by transferring 100 µl from well to well. Discard 100 µl from the last wells. Alternatively external standard dilution in tubes (see 9.5.1): Pipette 100 µl of these standard dilutions in the microwell strips.
4. Add 100 µl Sample Diluent, in duplicate, to the blank wells.
5. Add 50 µl Sample Diluent to sample wells.
6. Add 50 µl sample in duplicate, to designated sample wells.
7. Prepare Biotin-Conjugate.
8. Add 50 µl Biotin-Conjugate to all wells.
9. Cover microwell strips and incubate 2 hours at room temperature (18° to 25°C).
10. Prepare Streptavidin-HRP.
11. Empty and wash microwell strips 3 times with Wash Buffer.
12. Add 100 µl diluted Streptavidin-HRP to all wells.
13. Cover microwell strips and incubate 1 hour at room temperature (18° to 25°C).
14. Empty and wash microwell strips 3 times with Wash Buffer.
15. Add 100 µl of TMB Substrate Solution to all wells.
16. Incubate the microwell strips for about 10 minutes at room temperature (18° to 25°C).
17. Add 100 µl Stop Solution to all wells.
18. Blank microwell reader and measure colour intensity at 450 nm.

**Note: If instructions in this protocol have been followed samples have been diluted 1:2 (50 µl sample + 50 µl Sample Diluent), the concentration read from the standard curve must be multiplied by the dilution factor (x 2).**

## NOTES





<b>HEADQUARTERS:</b> BioVendor Laboratorní medicína, a.s.	CTPark Modrice Evropska 873	664 42 Modrice CZECH.REPUBLIC	Phone: +420-549-124-185 Fax: +420-549-211-460	E-mail: info@biovendor.com Web: www.biovendor.com
EUROPEAN UNION: BioVendor GmbH	Im Neuenheimer Feld 583	D-69120 Heidelberg GERMANY	Phone: +49-6221-433-9100 Fax: +49-6221-433-9111	E-mail: infoEU@biovendor.com
USA, CANADA AND MEXICO: BioVendor LLC	1463 Sand Hill Road Suite 227	Candler, NC 28715 USA	Phone: +1-828-670-7807 +1-800-404-7807 Fax: +1-828-670-7809	E-mail: infoUSA@biovendor.com
CHINA - Hong Kong Office: BioVendor Laboratories Ltd	Room 4008 Hong Kong Plaza, No.188	Connaught Road West Hong Kong, CHINA	Phone: +852-2803-0523 Fax: +852-2803-0525	E-mail: infoHK@biovendor.com
CHINA – Mainland Office: BioVendor Laboratories Ltd	Room 2405 YiYa Tower TianYu Garden, No.150	Lihe Zhong Road Guang Zhou, CHINA	Phone: +86-20-8706-3029 Fax: +86-20-8706-3016	E-mail: infoCN@biovendor.com