



Peninsula Laboratories, LLC

A Member of the Bachem Group

305 Old County Road, San Carlos, CA 94070

Tel: (800) 922-1516 • (650) 592-5392

Fax: (650) 595-4071

www.bachem.com

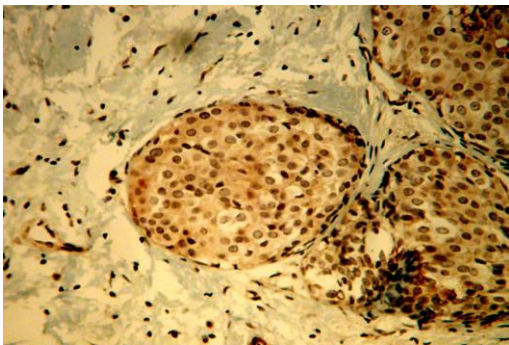
Cat. No. T-4815

Rabbit anti-Osteopontin (human) Serum

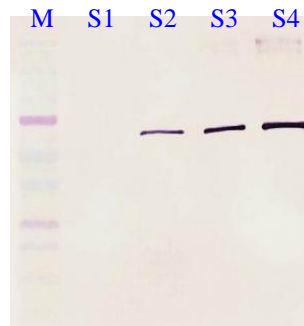
Specifications:

- Preparation:** This polyclonal antibody was collected from rabbits immunized with Osteopontin 170-187 (human) synthetic peptide as an immunogen.
- Amount:** Each vial contains 50 ul of whole serum in a lyophilized form.
Reconstitute with 50 ul of PBS for the equivalent of undiluted antiserum.
- Storage:** This antibody is supplied as a lyophilized powder. Store at 2° to 8°C upon receipt. For long-term storage, keep lyophilized powder at -20°C. Once reconstituted, the materials should be stored frozen in aliquots at -20°C to -70°C. **Avoid repeated freeze/thaw cycles.**
- Applications:** Immunohistochemistry: dilute approximately 1:16,000 (antigen retrieval recommended)
Western blot: dilute approximately 1:10,000

It is advised for each laboratory to determine optimal dilutions for a specific application.



Tissues used: human breast tumor (invasive ductal carcinoma)
Dilution: 1:16,000
Incubation time: Overnight at 4°C
Pre-treatment: 0.01M citrate buffer pH 6.0



M = protein standard,
S1 = 5 pg/well (1 ng/ml)
S2 = 25 pg/well (5 ng/ml)
S3 = 50 pg/well (10 ng/ml)
S4 = 0.1 ng/well (20 ug/ml)

Cross Reactivity:

Antigen	%
Osteopontin (170-187) (human)	100
Recombinant Osteopontin (human)	100
Osteopontin (164-179) (human)	1
Osteopontin (59-74) (human)	0
Osteopontin (mouse)	0