



# Peninsula Laboratories, LLC

A Member of the Bachem Group

305 Old County Road, San Carlos, CA 94070

Tel: (800) 922-1516 • (650) 592-5392

Fax: (650) 595-4071

www.bachem.com



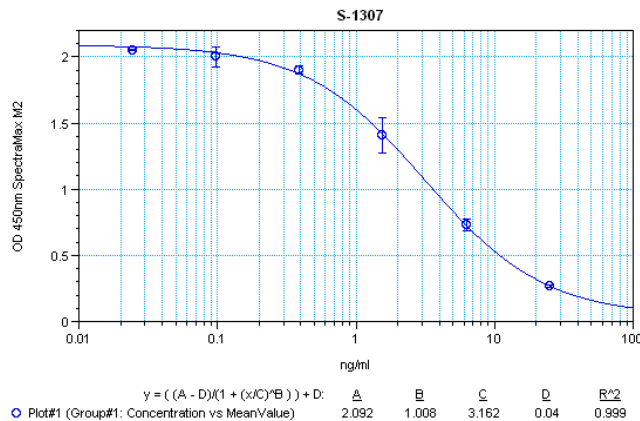
## Cat. No. S-1307

### Secretoneurin (mouse, rat)

**SPECIFICATIONS:** Formulated for extracted samples

**STANDARD:** 1 µg H-5512 H-Thr-Asn-Glu-Ile-Val-Glu-Glu-Gln-Tyr-Thr-Pro-Gln-Ser-Leu-Ala-Thr-Leu-Glu-Ser-Val-Phe-Gln-Glu-Leu-Gly-Lys-Leu-Thr-Gly-Pro-Ser-Asn-Gln-OH

**PROTOCOL:** IV (Std.AbON.Bt)  
**RANGE:** 0-25 ng/ml  
**AVERAGE IC<sub>50</sub>:** 3 ng/ml  
**SHELF-LIFE:** One year from production date



Suggested Preparation of Standards		
	ng/ml	Range: 0.02 to 25 ng/ml
<b>Stock</b>	1000	
<b>S1</b>	25.00	Add 25 µl stock + 975 µl diluent
<b>S2</b>	6.25	Add 200 µl S1 + 600 µl diluent
<b>S3</b>	1.56	Add 200 µl S2 + 600 µl diluent
<b>S4</b>	0.39	Add 200 µl S3 + 600 µl diluent
<b>S5</b>	0.10	Add 200 µl S4 + 600 µl diluent
<b>S6</b>	0.02	Add 200 µl S5 + 600 µl diluent
<b>S0</b>	0.00	500 µl diluent

### CROSS REACTION:

PEPTIDE	%
Secretoneurin (mouse, rat)	100
Catestatin	0
WE-14	0
Pancreastatin (porcine)	0